

WAAS CH <b>93838</b> <b>W27A</b>	APP CRS <b>270°</b>	Rwy Idg TDZE Apt Elev	<b>4043</b> <b>1240</b> <b>1243</b>
--	------------------------	-----------------------------	---

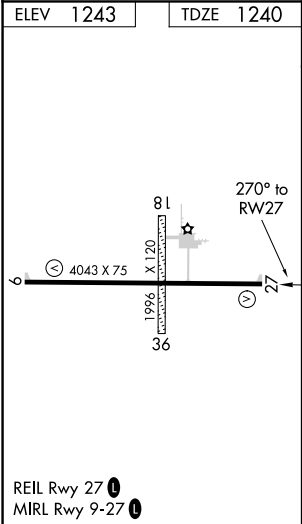
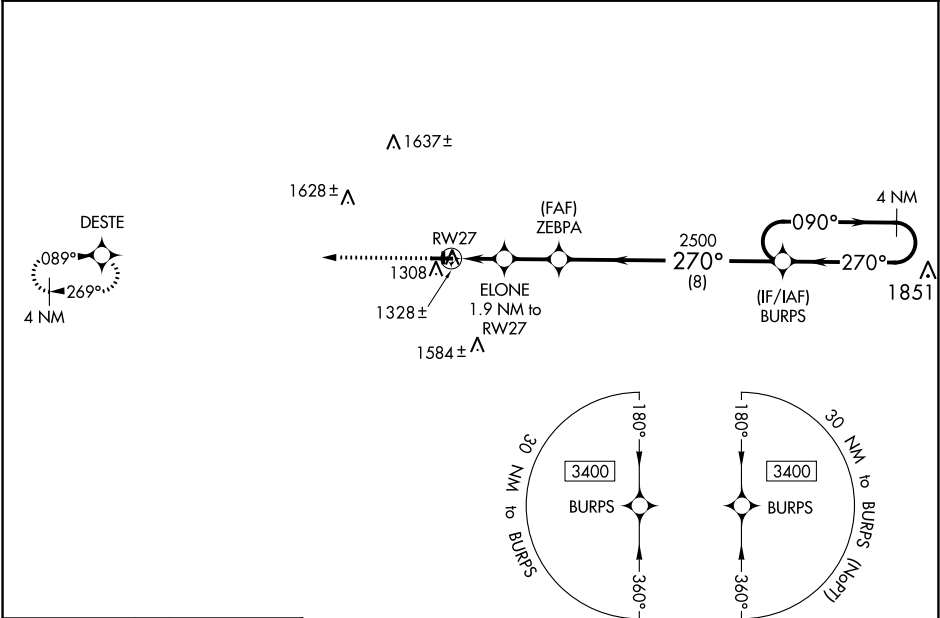
RNAV (GPS) RWY 27

CUMBERLAND MUNI (UBE)

▼ For uncompensated Baro-VNAV systems, LNAV/VNAV NA below -17°C (2°F) or above 54°C (130°F).  
▲ Baro-VNAV and VDP NA when using Rice Lake altimeter setting. DME/DME RNP-0.3 NA. Helicopter  
visibility reduction below ¾ SM NA. When local altimeter setting not received, use Rice Lake altimeter  
setting; increase LPV DA to 1533 feet and LNAV/VNAV DA to 1549 feet and all MDA 60 feet; increase  
LPV all Cats visibility and LNAV Cat C/D visibility ¼ mile; increase Circling Cat D visibility ¼ mile.

MISSED APPROACH:  
Climb to 3400 direct  
DESTE and hold.

AWOS-3PT <b>119.175</b>	MINNEAPOLIS CENTER <b>125.3 335.6</b>	GCO <b>121.725</b>	UNICOM <b>122.8 (CTAF) 0</b>
----------------------------	--	-----------------------	---------------------------------



3400	DESTE	VGSI and RNAV glidepath not coincident (VGSI Angle 3.00/TCH 29).			
*LNAV only		ELONE 1.9 NM to RW27	ZEBPA 2500	BURPS	4 NM Holding Pattern
RW27		*1 NM to RW27	*1860	2500	GP 3.00° TCH 40
		1 NM	0.9 NM	2 NM	8 NM
CATEGORY	A	B	C	D	
LPV DA	1490-1 250 (300-1)				
LNAV/VNAV DA	1506-1 266 (300-1)				
LNAV MDA	1580-1 340 (400-1)				
CIRCLING	1640-1 397 (400-1)	1940-1 697 (700-1)	1940-2 697 (700-2)	1980-2 ¼ 737 (800-2 ¼)	