

APP CRS
318°

Rwy Idg
TDZE
Apt Elev

4660
988
989

RNAV (GPS) RWY 32

BURNETT COUNTY (RZN)

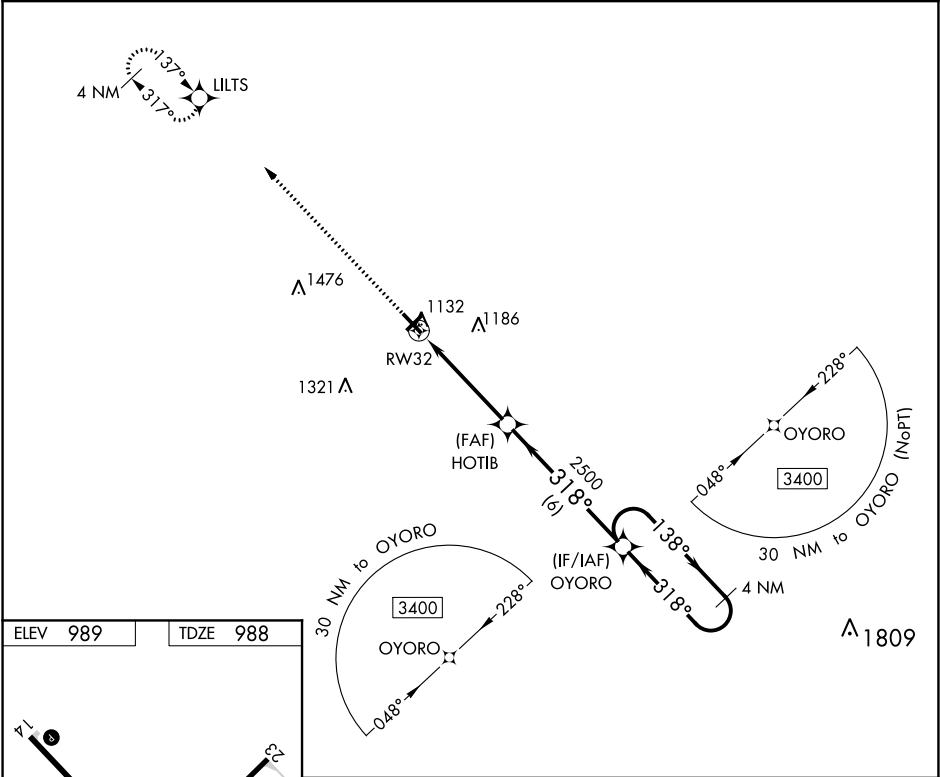
⚠

DME/DME RNP-0.3 NA. When local altimeter setting not received, use Rush City, MN altimeter setting and increase all MDA 80 feet; increase LNAV Cat C/D visibility ¼ mile, and Circling Cat C/D visibility ¼ mile. Helicopter visibility reduction below 1 SM NA. Night landing: Rwy 5, 23, 32 NA.

MISSED APPROACH:

Climb to 3400 direct LILTS and hold.

AWOS-3 118.325	MINNEAPOLIS CENTER 121.05 397.9	UNICOM 122.8 (CTAF) 0
-------------------	------------------------------------	--------------------------



ELEV 989

TDZE 988

3400 LILTS

VGSI and descent angles not coincident (VGSI Angle 4.00/TCH 38).

3400

4 NM Holding Pattern

HOTIB

318°

138°

3400

RW32

318° to RW32

3.00°

TCH 40

4.6 NM

6 NM

CATEGORY	A	B	C	D
LNAV MDA	1 440-1 452 (500-1)		1 440-1 3/8 452 (500-1 3/8)	
CIRCLING	1 440-1 451 (500-1)		1 540-1 1/2 551 (600-1 1/2)	1 680-2 1/4 691 (700-2 1/4)