

APP CRS	Rwy Idg	3900
046°	TDZE	989
	Apt Elev	989

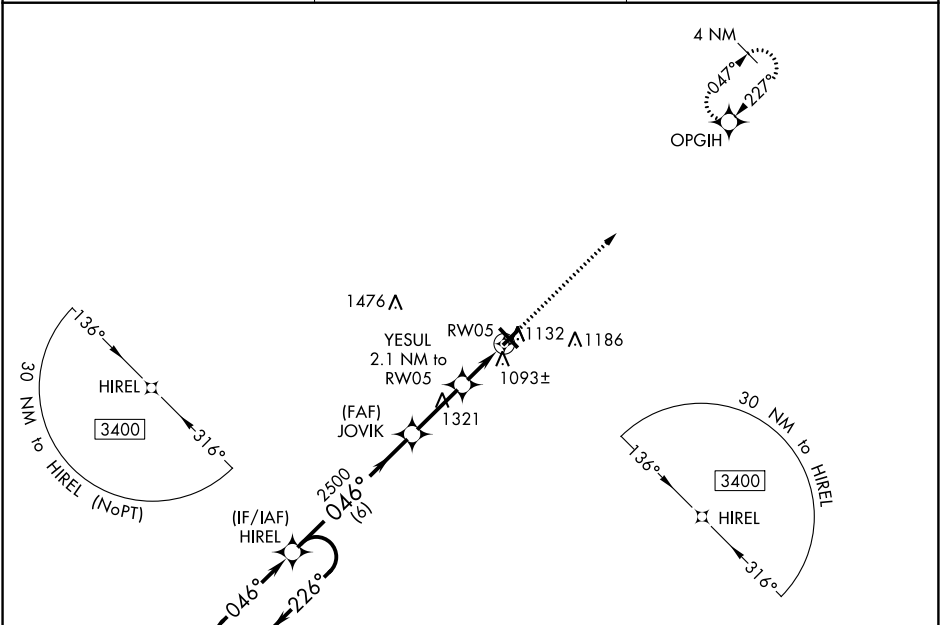
RNAV (GPS) RWY 5

BURNETT COUNTY (RZN)

DME/DME RNP-0.3 NA. Helicopter visibility reduction below 1 SM NA.
Night Landing: Rwy 5, 23, 32 NA. When local altimeter setting not received,
use Rush City, MN altimeter setting and increase all MDA 80 feet; increase
LNAV Cat C/D visibility ⅓ mile, and Circling Cat C/D visibility ¼ mile.

MISSED APPROACH:
Climb to 3400 direct
OPGIH and hold.

AWOS-3 118.325	MINNEAPOLIS CENTER 121.05 397.9	UNICOM 122.8 (CTAF) 0
--------------------------	---	---------------------------------



4 NM Holding Pattern

3400

226°

046°

HIREL

VGSI and descent angles not coincident (VGSI Angle 3.50/TCH 31).

JOVIK

2500

3.00°

TCH 40

1680

YESUL 2.1 NM to RWY 5

RWY 5

3400

OPGIH

6 NM

2.5 NM

2.1 NM

CATEGORY	A	B	C	D
LNAV MDA	1360-1 371 (400-1)			
CIRCLING	1440-1 451 (500-1)		1540-1½ 551 (600-1½)	1680-2¼ 691 (700-2¼)

ELEV 989

TDZE 989

5000 X 75

3900 X 75

32

046° to RWY 5

EC-3, 31 DEC 2020 to 28 JAN 2021

EC-3, 31 DEC 2020 to 28 JAN 2021