

WAAS CH 56318 W29A	APP CRS 292°	Rwy Idg TDZE Apt Elev	4265 831 838
--	------------------------	-----------------------------	---

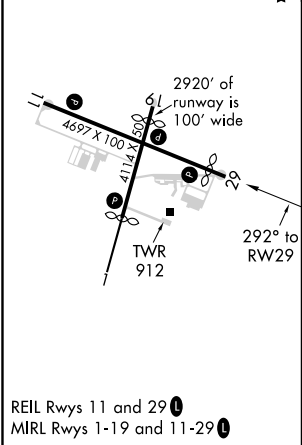
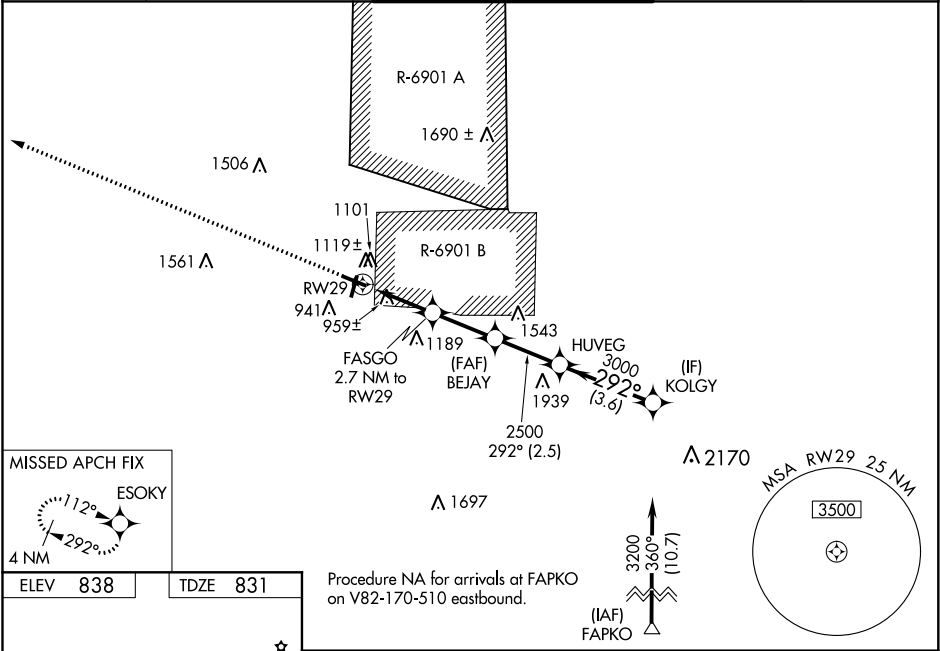
RNAV (GPS) RWY 29
SPARTA/FORT MC COY (CMY)

⚠ Circling to Rwy 19 NA at night. For uncompensated Baro-VNAV systems, LNAV/VNAV NA below -16°C (4°F) or above 38°C (100°F). DME/DME RNP-0.3 NA. Helicopter visibility reduction below 1 SM not authorized. Baro-VNAV and VDP NA when using La Crosse altimeter setting. When local altimeter setting not received, use La Crosse altimeter setting and increase all DA 79 feet and all MDA 80 feet; increase LPV all Cats visibility 3/8 mile, and LNAV/VNAV all Cats and LNAV and Circling Cats C/D visibility 1/4 mile. Procedure not authorized when R-6901B is active.

MISSED APPROACH:
Climb to 4000 direct
ESOKY and hold.

❄ -33°C

AWOS-3 119.775	VOLK APP CON ★ 135.25 244.875	SPARTA/MC COY TOWER ★ 124.6 241.0	GND CON 123.1	CTAF 124.6
--------------------------	---	---	-------------------------	----------------------



4000		ESOKY		VGSi and RNAV glidepath not coincident (VGSi Angle 3.00/TCH 43).	
*INAV only		FASGO 2.7 NM to RWY 29		BEJAY 2500	
*1.5 NM to RWY 29		*1720		HUVEG 3000	
1.5 NM		1.2 NM		2.4 NM	
2.5 NM		3.6 NM		GP 3.00° TCH 40	
CATEGORY	A	B	C	D	
LPV DA	1107-7/8		276 (300-7/8)		
LNAV/VNAV DA	1263-1 1/2		432 (500-1 1/2)		
LNAV MDA	1320-1 489 (500-1)		1320-1 3/8		489 (500-1 3/8)
CIRCLING	1520-1 682 (700-1)	1540-1 702 (800-1)	1580-2 1/4 742 (800-2 1/4)	1620-2 1/2 782 (800-2 1/2)	

EC-3, 31 DEC 2020 to 28 JAN 2021

EC-3, 31 DEC 2020 to 28 JAN 2021