

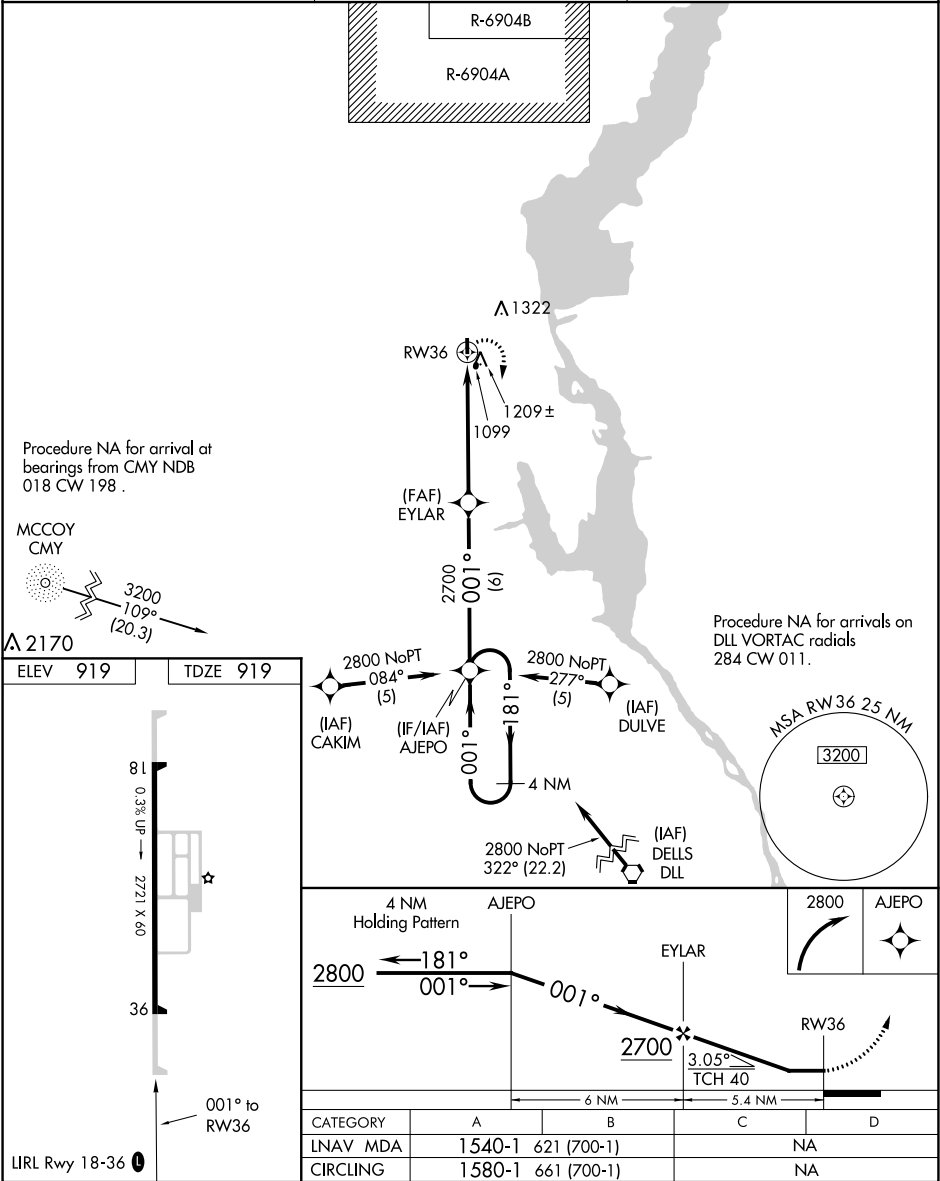
APP CRS	Rwy Idg	2721
001°	TDZE	919
	Apt Elev	919

RNAV (GPS) RWY 36

NECEDAH (DAF)

<div><div>▼</div><div>NA</div></div> <div>Rwy 36 helicopter visibility reduction below 1 SM NA. DME/DME-0.3 NA. Procedure NA at night. Use Wisconsin Rapids altimeter setting.</div>	MISSED APPROACH: Climbing right turn to 2800 direct AJEPO and hold.
--	---

ISW ASOS 126.575	VOLK APP CON ★ 135.25 244.875	UNICOM 122.7 (CTAF) 0
---------------------	----------------------------------	--------------------------



EC-3, 31 DEC 2020 to 28 JAN 2021

EC-3, 31 DEC 2020 to 28 JAN 2021