

WAAS CH <b>78308</b> <b>W09A</b>	APP CRS <b>092°</b>	Rwy Idg <b>4401</b> TDZE <b>1482</b> Apt Elev <b>1487</b>
--	------------------------	--

RNAV (GPS) RWY 9  
TOMAHAWK RGNL (TKV)

RNP APCH.



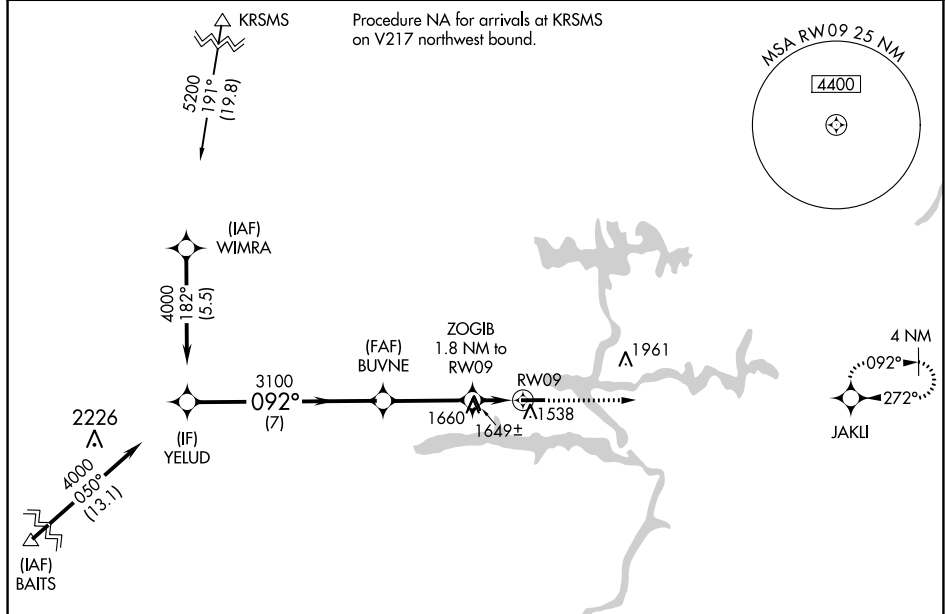
Rwy 9 helicopter visibility reduction below  $\frac{3}{4}$  SM NA.

**MISSED APPROACH:** Climb to 4000 direct JAKU and hold.

AWOS-3  
118,250

MINNEAPOLIS CENTER  
133.65 281.5

UNICOM  
122.8 (CTAF) **L**



### Procedure NA for arrivals at BAITS on V78 southwest bound.

