

LOC I-EEZ	APP CRS	Rwy Idg	<b>5099</b>
<b><u>110.5</u></b>	<b>315°</b>	TDZE	<b>1423</b>
		Apt Elev	<b>1425</b>

ILS or LOC RWY 31  
CHANDLER FIELD (AXN)

**T**  
**A** NA

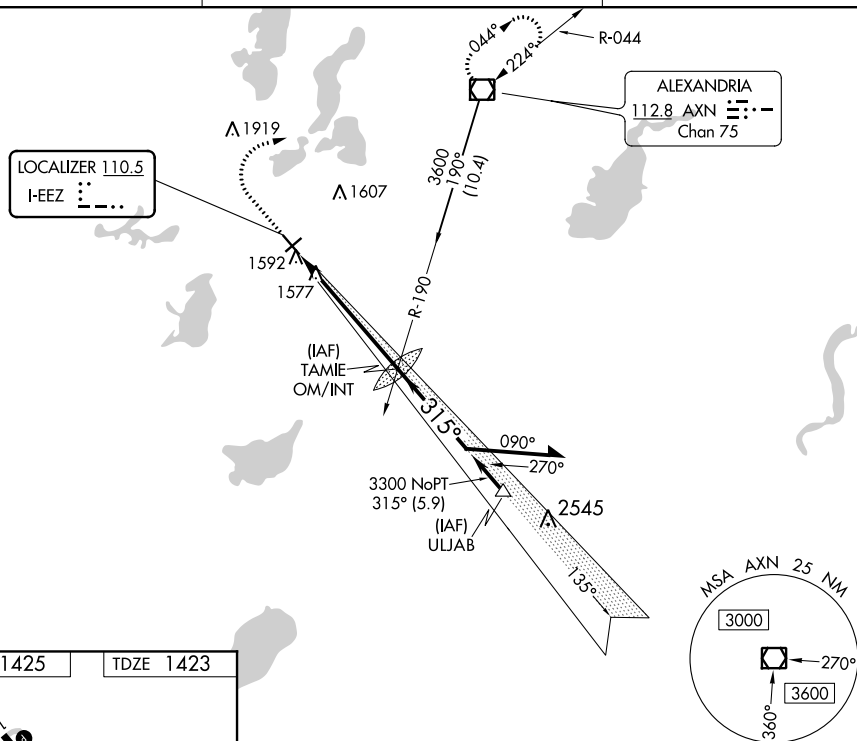
Inoperative table does not apply to S-LOC 31 Category C.

ODALS

**MISSED APPROACH:** Climb to 2500 then climbing right turn to 3500 direct AXN VOR/DME and hold.

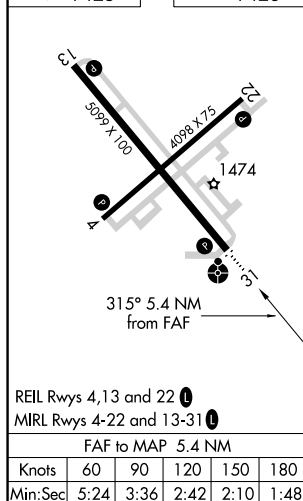
ASOS  
118.375

MINNEAPOLIS CENTER  
126.1 269.2

UNICOM  
123.0 (CTAF) **L**

NC-1, 31 DEC 2020 to 28 JAN 2021

ELEV 1425		TDZE 1423
-----------	--	-----------



ALEXANDRIA, MINNESOTA

Orig-D 15SEP16

45°52'N-95°24'W

CHANDLER FIELD (AXN)  
ILS or LOC RWY 31

NC-1, 31 DEC 2020 to 28 JAN 2021