

WAAS CH 48917 W22A	APP CRS 225°	Rwy Idg 4098 TDZE 1424 Apt Elev 1425
--	------------------------	---

RNAV (GPS) RWY 22
CHANDLER FIELD (AXN)

RNP APCH.

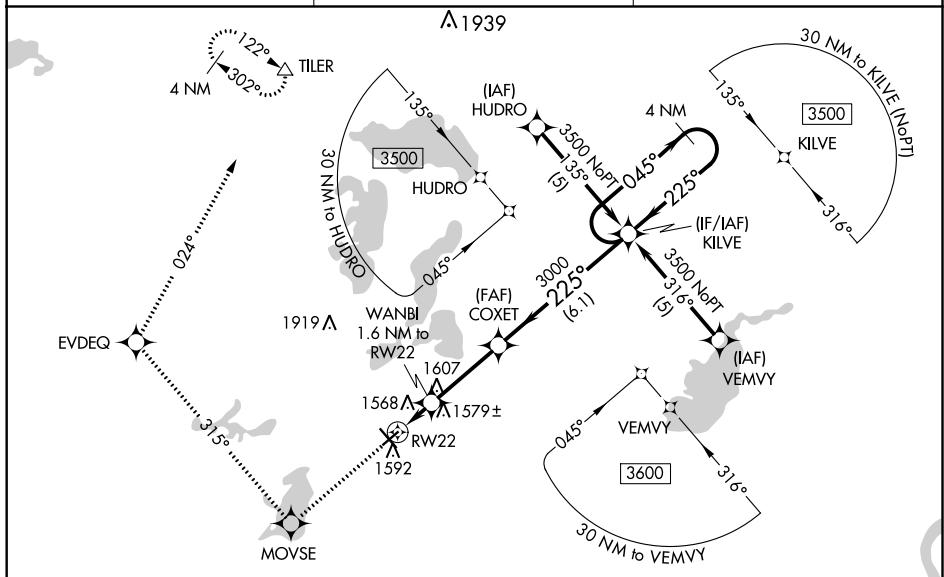
▼ Baro-VNAV NA when using Glenwood altimeter setting. For uncompensated
▲ Baro-VNAV systems, LNAV/VNAV NA below -17°C or above 46°C.
When local altimeter setting not received, use Glenwood altimeter setting and
increase all DA 37 feet and all MDA 40 feet, increase LNAV/VNAV all Cats and
LNAV Cat D visibility ¼ mile. Rwy 22 helicopter visibility reduction below ¼ SM NA.

MISSED APPROACH: Climb to 3500 direct MOVSE and right turn on track 315° to EVDEQ and on track 024° to TILER and hold.

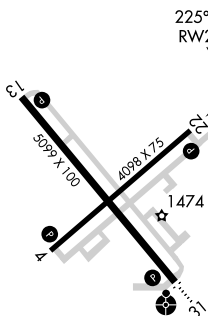
ASOS
118.375

MINNEAPOLIS CENTER
126.1 269.2

UNICOM
123.0 (CTAF) **L**



ELEV 1425		TDZE 1424
-----------	--	-----------

[illegible]

		1.6 NM		3.2 NM		6.1 NM			
CATEGORY		A		B		C		D	
LPV	DA	1677-1 253 (300-1)							
LNAV/ VNAV	DA	1880-1½ 456 (500-1½)							
LNAV	MDA	1840-1 416 (500-1)				1840-1¼ 416 (500-1¼)			

REIL Rwys 4, 13 and 22 **L**
MIRL Rwys 4-22 and 13-31 **L**