

| | | | |
|--|------------------------|---|-------------|
| WAAS CH 61007 W31A | APP CRS 315° | Rwy Idg TDZE 1423 Apt Elev 1424 | 5099 |
|--|------------------------|---|-------------|

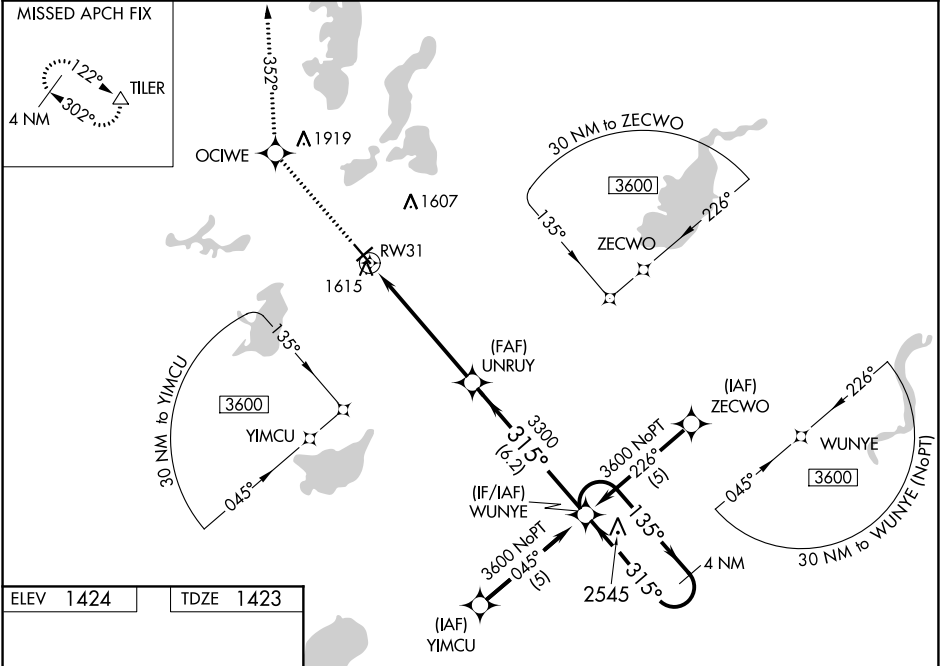
RNAV (GPS) RWY 31
CHANDLER FIELD (A.X.N)

⚠ Inoperative table does not apply to LPV & LNAV/VNAV Cats A/B/C and LNAV Cat C. For uncompensated Baro-VNAV systems, LNAV/VNAV NA below -17°C (2°F) or above 46°C (114°F). DME/DME RNP -0.3 NA. VDP and Baro-VNAV NA when using Glenwood altimeter setting. When local altimeter setting not received, use Glenwood altimeter setting and increase all DAs/MDAs 40 feet and increase LPV and LNAV/VNAV visibilities ¼ mile all Cats.

ODALS

MISSED APPROACH: Climb to 3500 direct OCIWE and via 352° track to TILER and hold.

| | | |
|------------------------|--|---------------------------------|
| ASOS 118.375 | MINNEAPOLIS CENTER 126.1 269.2 | UNICOM 123.0 (CTAF) 0 |
|------------------------|--|---------------------------------|



| | | | | | |
|------------------|------------------|--|-------------------------|-------------------------|--|
| ELEV 1424 | TDZE 1423 | <div><div><div>3500</div><div>OCIWE</div><div>tr 352°</div></div><div><div>UNRUJ</div><div>TILER</div><div>△</div></div><div><div>WUNYE</div><div>4 NM Holding Pattern</div></div></div> | | | |
| | | <div><div>*LNAV only.</div><div>*1.3 NM to RW31</div><div>GP 3.00° TCH 49</div></div> | | | |
| | | <div><div>1.3 NM</div><div>4.4 NM</div><div>6.2 NM</div></div> | | | |
| CATEGORY | A | B | C | D | |
| LPV DA | 1815-1¼ | | 392 (400-1¼) | | |
| LNAV/VNAV DA | 1885-1½ | | 462 (500-1½) | | |
| LNAV MDA | 1880-¾ | 457 (500-¾) | 1880-1¼ 457 (500-1¼) | 1880-1½ 457 (500-1½) | |
| CIRCLING | 1920-1 | 496 (500-1) | 1920-1½ 496 (500-1½) | 1980-2 556 (600-2) | |