


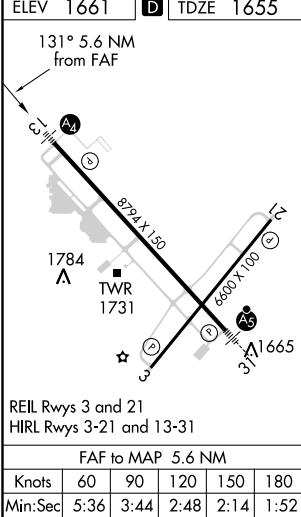
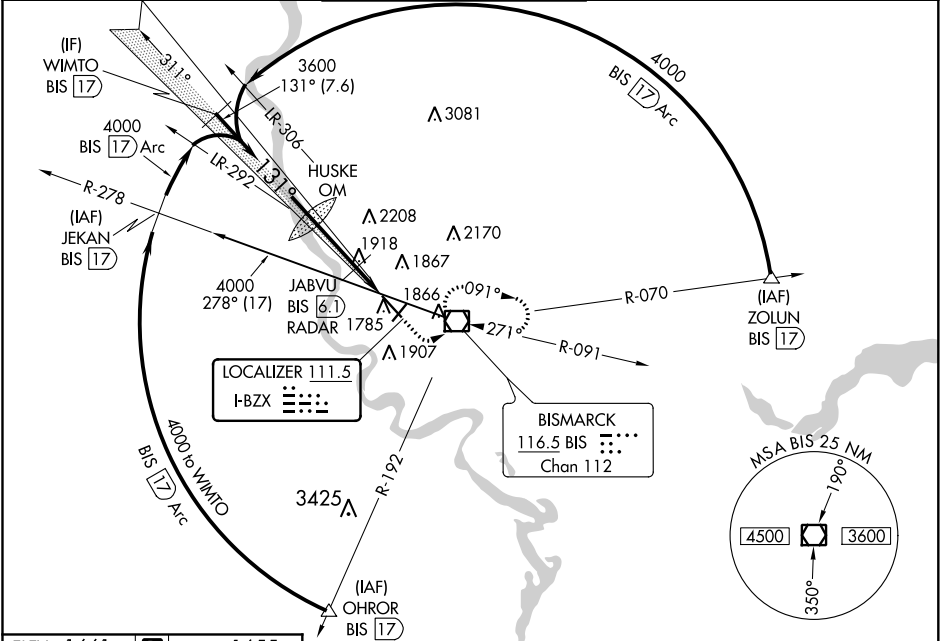


LOC I-BZX <b>111.5</b>	APP CRS <b>131°</b>	Rwy Idg TDZE Apt Elev <b>8794</b> <b>1655</b> <b>1661</b>
---------------------------	------------------------	--

ILS or LOC RWY 13  
BISMARCK MUNI (BIS)

DME required for procedure entry. DME required.			MALS 	MISSED APPROACH: Climb to 2200 then climbing left turn to 3600 direct BIS VOR/DME and hold, continue climb-in-hold to 3600.
Inop table does not apply to S-ILS 13. DME from BIS VOR/DME. Simultaneous reception of I-BZX and BIS DME required. # DME from BIS VOR/DME.				
 ASR -35°C				
ATIS 119.35	BISMARCK APP CON ★ 126.3 298.9	BISMARCK TOWER ★ 118.3 (CTAF) 0 257.8	GND CON 121.9	UNICOM 122.95



WIMTO BIS 17		HUSKE OM		JABVU BIS 6.1 RADAR	
4000		3536		2200 3600 BIS	
131°		3600		*2380	
GS 3.00° TCH 58		7.6 NM		3.5 NM	
		2.1 NM			
CATEGORY	A	B	C	D	
S-ILS 13	1855-¾ 200 (200-¾)				
S-LOC 13	2380-¾	725 (800-¾)	2380-1¾	725 (800-1¾)	
CIRCLING	2380-1	719 (800-1)	2460-2¼ 799 (800-2¼)	2460-2½ 799 (800-2½)	
# JABVU FIX MINIMUMS					
S-LOC 13	2180-¾	525 (600-¾)	2180-1¼	525 (600-1¼)	
CIRCLING	2200-1	539 (600-1)	2460-2¼ 799 (800-2¼)	2460-2½ 799 (800-2½)	