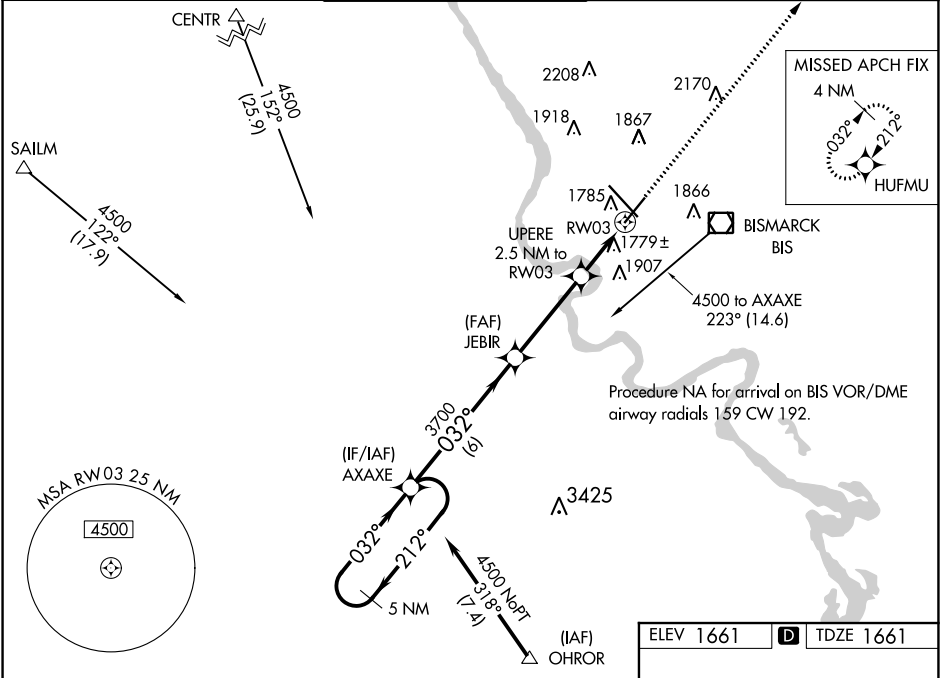


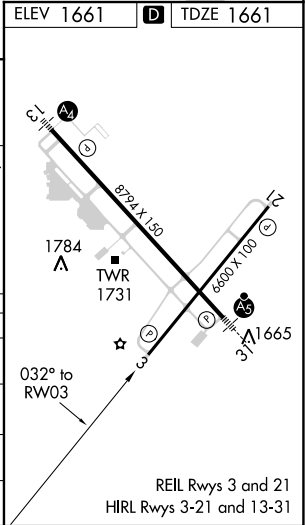
WAAS CH 63099 W03A	APP CRS 032°	Rwy Idg TDZE 1661 Apt Elev 1661
--	------------------------	---

RNAV (GPS) RWY 3
BISMARCK MUNI (BIS)

T A ASR -35°C	For uncompensated Baro-VNAV systems, LNAV/VNAV NA below -18°C (0°F) or above 33°C (91°F). DME/DME RNP-0.3 NA.		MISSED APPROACH: Climb to 4000 direct HUFMU and hold.	
ATIS 119.35	BISMARCK APP CON ★ 126.3 298.9	BISMARCK TOWER ★ 118.3 (CTAF) 0 257.8	GND CON 121.9	UNICOM 122.95



5 NM Holding Pattern		AXAXE	JEBIR	UPERE	HUFMU
4500		212°	032°	3700	4000
GP 3.00° TCH 48		032°	3700	2.5 NM to RW03	*LNAV only.
6 NM		3.8 NM	1.5 NM	1 NM	*1 NM to RW03
2500					RW03
CATEGORY	A	B	C	D	
LPV DA	1861-3/4 200 (200-3/4)				
LNAV/VNAV DA	2081-13/8 420 (500-13/8)				
LNAV MDA	2040-1 379 (400-1)				
CIRCLING	2200-1 539 (600-1)	2460-2 799 (800-2 1/4)	2460-2 799 (800-2 1/2)		



NC-1, 31 DEC 2020 to 28 JAN 2021

NC-1, 31 DEC 2020 to 28 JAN 2021