

WAAS CH 56599 W31A	APP CRS 311°	Rwy Idg 8794 TDZE 1645 Apt Elev 1661
--	------------------------	---

RNAV (GPS) RWY 31
BISMARCK MUNI (BIS)

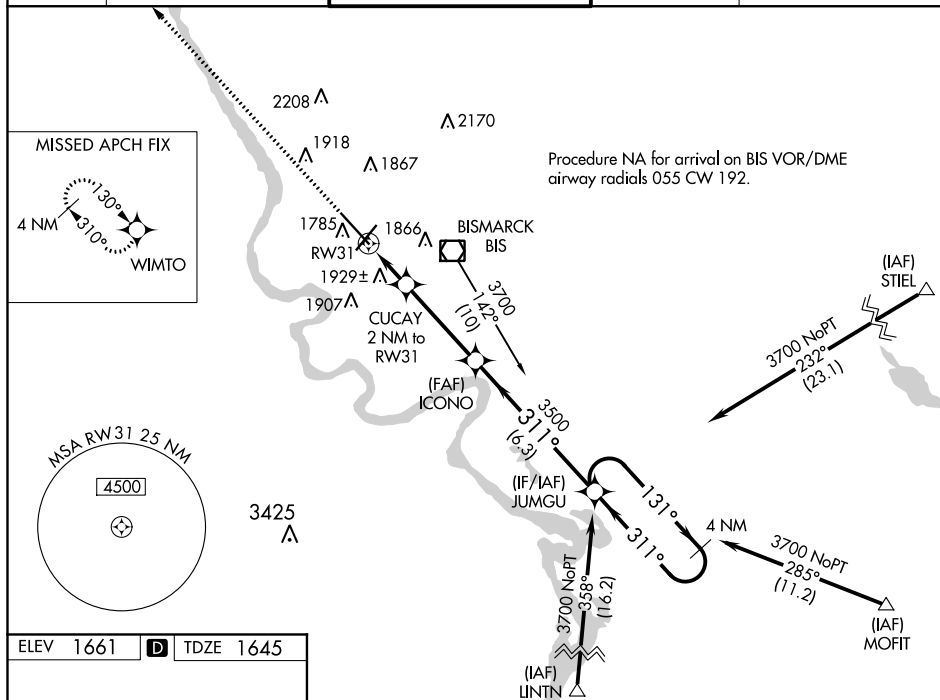
For uncompensated Baro-VNAV systems, LNAV/VNAV NA below -18°C (0°F) or above 33°C (91°F). DME/DME RNP-0.3 NA. ** RVR 1800 authorized with use of FD or AP or HUD to DA.

MALSR

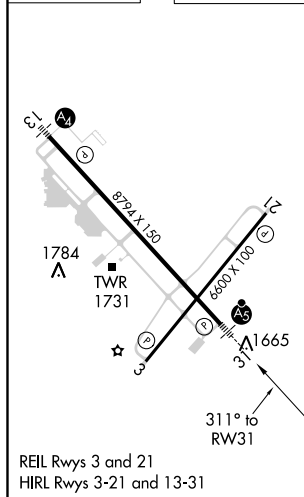


MISSED APPROACH: Climb to 3800
direct WIMTO and hold.

ATIS 119.35	BISMARCK APP CON★ 126.3 298.9	BISMARCK TOWER★ 118.3(CTAF) 0 257.8	GND CON 121.9	UNICOM 122.95
-----------------------	---	---	-------------------------	-------------------------



ELEV 1661	D	TDZE 1645
-----------	----------	-----------



JMWAVE

3800
↑
WIMTO

*LNAV only.

CUCAY
2 NM to RW31

ICONO
3500

JUMGU

4 NM
Holding Pattern

RW31

2320*

311°

131° →

← 311°

3700

GP 3.00°
TCH 48

2 NM 3.7 NM 6.3 NM

CATEGORY	A	B	C	D
LPV DA	1845/24 200 (200-½)			
LNAV/ VNAV DA	2269-1¾ 624 (700-1¾)			
LNAV MDA	2180/24 535 (600-½)		2180/55 535 (600-1)	
C CIRCLING	2200-1 539 (600-1)		2460-2¼ 799 (800-2¼)	2460-2½ 799 (800-2½)