

VOR/DME BIS <b>116.5</b> Chan <b>112</b>	APP CRS <b>271°</b>	Rwy Idg TDZE Apt Elev	<b>N/A</b> <b>N/A</b> <b>1661</b>
--	------------------------	-----------------------------	---

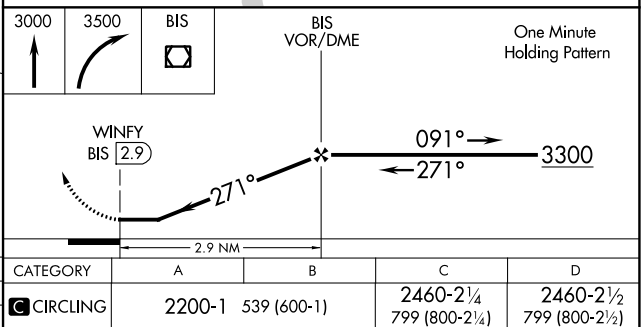
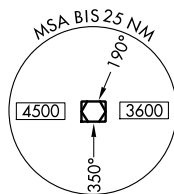
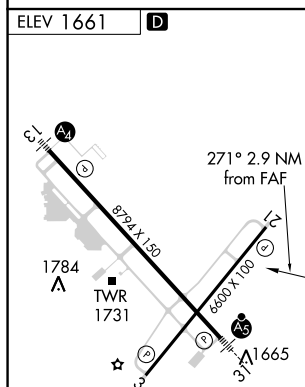
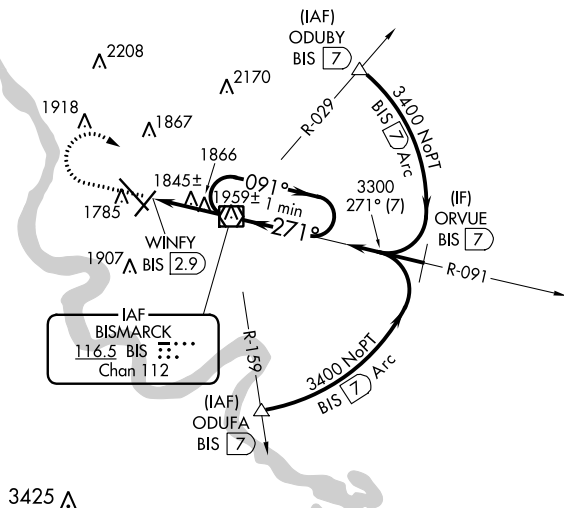
VOR-A  
BISMARCK MUNI (BIS)



 ASR
  -35°C

**MISSED APPROACH:** Climb to 3000 then climbing right turn to 3500 direct BIS VOR/DME and hold.

ATIS 119.35	BISMARCK APP CON ★ 126.3 298.9	BISMARCK TOWER ★ 118.3 (CTAF) 0 257.8	GND CON 121.9	UNICOM 122.95
----------------	-----------------------------------	--	------------------	------------------



BISMARCK, NORTH DAKOTA  
Amdt 21A 23APR20

BISMARCK MUNI (BIS)  
VOR-A

46°46'N-100°45'W

NC-1, 31 DEC 2020 to 28 JAN 2021

NC-1, 31 DEC 2020 to 28 JAN 2021