

WAAS CH <b>99643</b> <b>W15A</b>	APP CRS <b>140°</b>	Rwy Idg <b>7301</b> TDZE <b>2586</b> Apt Elev <b>2592</b>
--	------------------------	---

RNAV (GPS) RWY 15

DICKINSON-THEODORE ROOSEVELT RGNL (DIK)

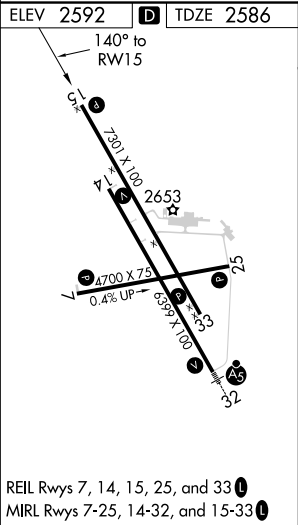
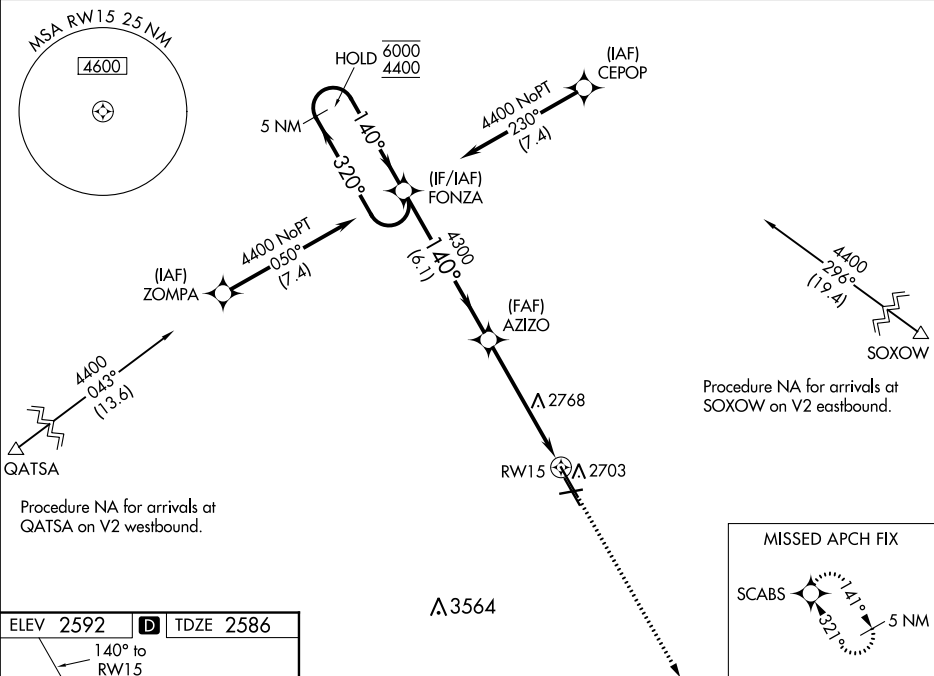
RNP APCH.

For uncompensated Baro-VNAV systems, LNAV/VNAV NA below -24°C or above 54°C.

-30°C

MISSED APPROACH: Climb to 5000 direct SCABS and hold.

ASOS <b>118.375</b>	MINNEAPOLIS CENTER <b>124.25 236.825</b>	UNICOM <b>123.0 (CTAF) 0</b>
------------------------	---	---------------------------------



VGSi and RNAV glidepath not coincident (VGSi Angle 3.00/TCH 43).				5000	SCABS
5 NM Holding Pattern				↑	✧
FONZA				*LNAV only	
AZIZO				*1.2 NM to RWY 15	
RWY 15					
GP 3.00° TCH 52					
6.1 NM				4 NM	
				1.2 NM	
CATEGORY	A	B	C	D	
LPV DA	2786-1		200 (200-1)		
LNAV/VNAV DA	2836-1		250 (300-1)		
LNAV MDA	3020-1	434 (500-1)	3020-1¼	434 (500-1¼)	
CIRCLING	3060-1	468 (500-1)	3120-1½ 528 (600-1½)	3200-2 608 (700-2)	