

WAAS CH 82534 W25A	APP CRS 250°	Rwy Idg 4700 TDZE 2592 Apt Elev 2592
--	------------------------	---

RNAV (GPS) RWY 25

DICKINSON-THEODORE ROOSEVELT RGNL (DIK)

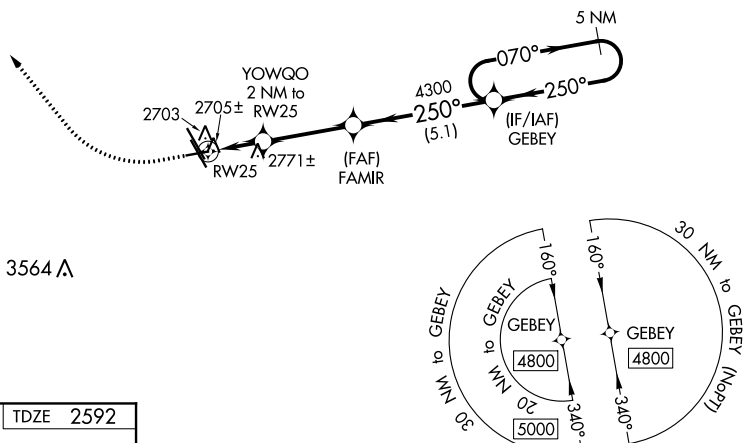
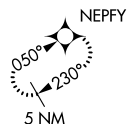
RNP APCH.

T Rwy 25 helicopter visibility reduction below $\frac{3}{4}$ SM NA. When local altimeter setting not received, use Bowman altimeter setting and increase all MDA 160 feet and visibility Cats C and D $\frac{1}{2}$ SM.

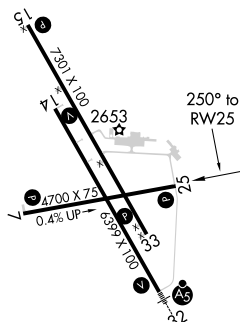
MISSED APPROACH: Climb to 3200 then climbing right turn to 4800 direct NEPFY and hold.

ASOS
118.375

MINNEAPOLIS CENTER
124.25 236.825

UNICOM
123.0 (CTAF) **L**

ELEV	2592	D	TDZE	2592
------	------	----------	------	------



REIL Rwy 7, 14, 15, 25, and 33 **L**
MIRL Rwy 7-25, 14-32, and 15-33 **L**

DICKINSON-THEODORE ROOSEVELT RGNL (DIK)

46°48'N-102°48'W

RNAV (GPS) RWY 25

NC-1, 31 DEC 2020 to 28 JAN 2021

NC-1, 31 DEC 2020 to 28 JAN 2021