

WAAS CH 45512 W32A	APP CRS 320°	Rwy Idg 6399 TDZE 2591 Apt Elev 2592
--	------------------------	---

RNAV (GPS) RWY 32

DICKINSON-THEODORE ROOSEVELT RGNL (DIK)

RNP APCH.

T

A

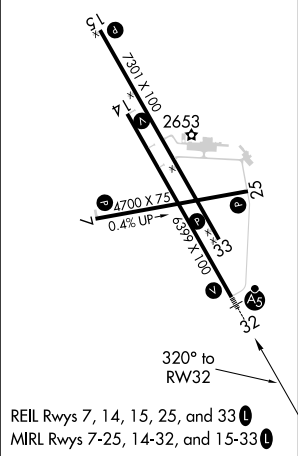
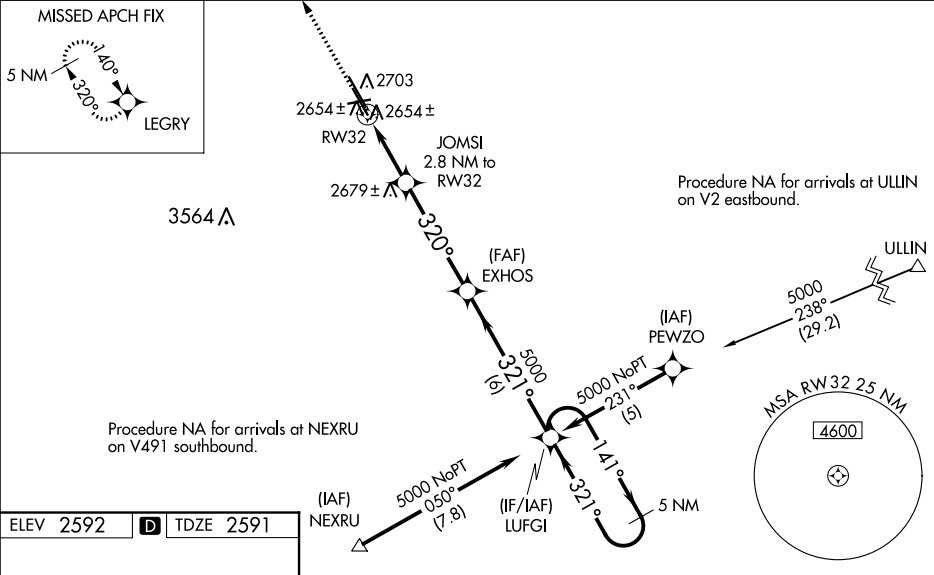
❄-30°C

For uncompensated Baro-VNAV systems, LNAV/VNAV NA below -20°C (-4°F) or above 44°C (111°F). When local altimeter setting not received, use Bowman altimeter setting and increase all DA 266 feet, all MDA 280 feet, increase LPV all Cats visibility ½ SM, LNAV/VNAV Cats A/B/C visibility 1 SM, Cat D visibility ¾ SM, LNAV Cats C/D visibility ¾ SM, Circling Cat C visibility ¾ SM, Cat D visibility 1 SM. For inop ALS when using Bowman altimeter setting, increase LPV all Cats visibility to 1½ SM, LNAV/VNAV all Cats visibility to 2 SM, LNAV Cat C visibility to 2 SM and Cat D visibility to 2 ¼ SM. For inop ALS, increase LNAV/VNAV Cat D visibility to 1 SM and LNAV Cat D visibility to 1 ½ SM. VDP and Baro-VNAV NA when using Bowman altimeter setting.

MALSR

MISSED APPROACH:
Climb to 5000 direct
LEGRY and hold.

ASOS 118.375	MINNEAPOLIS CENTER 124.25 236.825	UNICOM 123.0 (CTAF) 1
------------------------	---	---------------------------------



5000	LEGRY	VGSi and RNAV glidepath not coincident (VGSi Angle 3.00/TCH 55).		5 NM Holding Pattern
*LNAV only		JOMSI 2.8 NM to RW32	EXHOS	LUFGI
*1.2 NM to RW32		320°	321°	141°
RW32		3540*	5000	5000
1.2 NM		1.6 NM	4.4 NM	6 NM
CATEGORY	A	B	C	D
LPV DA	2791-½ 200 (200-½)			
LNAV/VNAV DA	2924-½ 333 (400-½)			2924-¾ 333 (400-¾)
LNAV MDA	3000-½ 409 (500-½)		3000-¾ 409 (500-¾)	3000-1 409 (500-1)
CIRCLING	3080-1 488 (500-1)	3100-1 508 (600-1)	3120-1½ 528 (600-1½)	3220-2 628 (700-2)