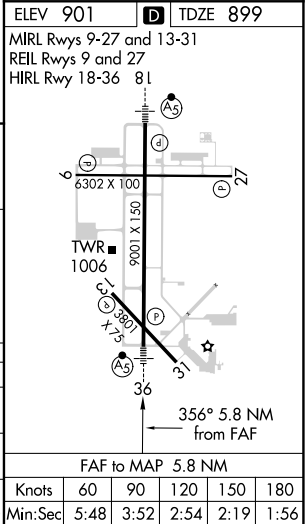
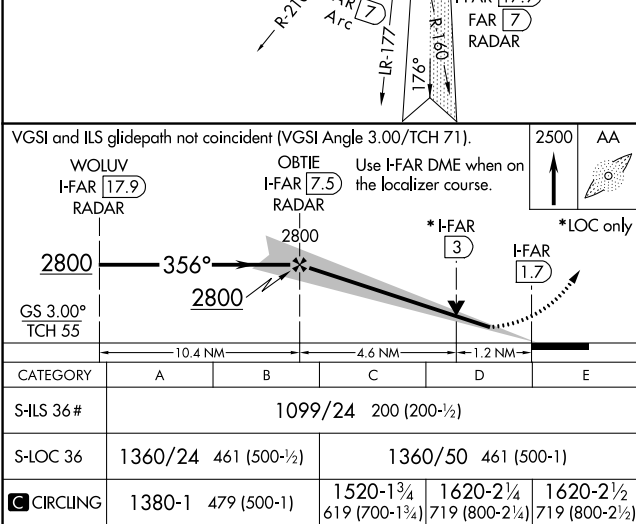
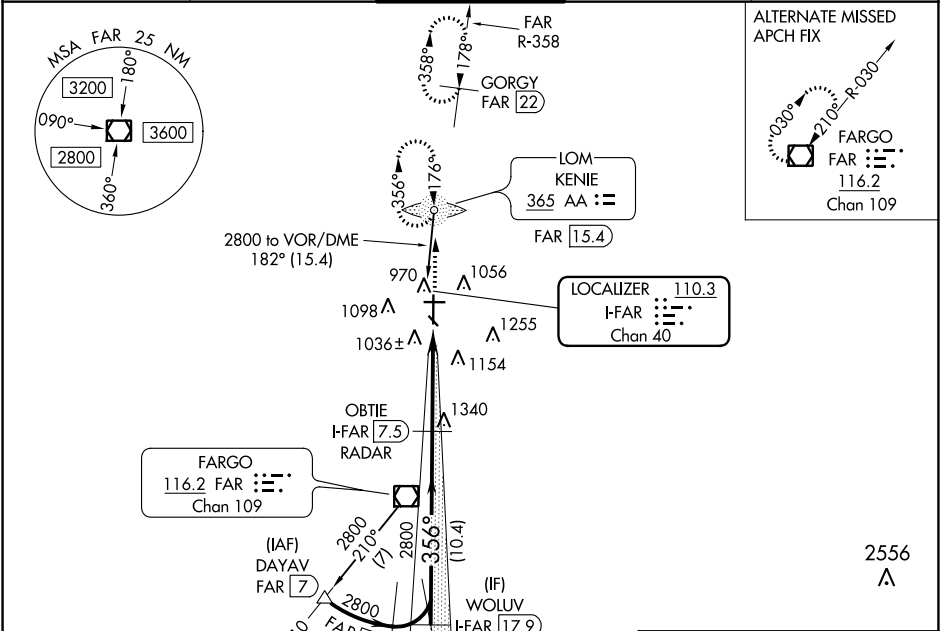


LOC/DME I-FAR 110.3 Chan 40	APP CRS 356°	Rwy Idg TDZE Apt Elev	9001 899 901
---	------------------------	-----------------------------	---

ILS or LOC RWY 36
HECTOR INTL (FAR)

ADF or DME required for procedure entry. ADF or DME required.	MALSR 	MISSED APPROACH: Climb to 2500 direct KENIE LOM and hold (DME aircraft climb to 4000 on FAR VOR/DME R-358 to GORGY/22 DME and hold N, RT, 178° inbound, continue climb-in-hold to 4000).
 For inop ALS increase S-ILS 36 Cat E visibility to 1 3/8 SM. # RVR 1800 authorized with use of FD or AP or HUD to DA.		

ATIS 124.5 379.2	FARGO APP CON 120.4 377.15	FARGO TOWER 133.8 290.4	GND CON 121.9 348.6	CLINC DEL 121.9 348.6
----------------------------	--------------------------------------	-----------------------------------	-------------------------------	---------------------------------



NC-1, 31 DEC 2020 to 28 JAN 2021

NC-1, 31 DEC 2020 to 28 JAN 2021