

WAAS CH 70314 W12A	APP CRS 121°	Rwy Idg TDZE 1289 Apt Elev 1289
--	------------------------	---

RNAV (GPS) RWY 12

HURON RGNL (HON)

RNP APCH.

▼

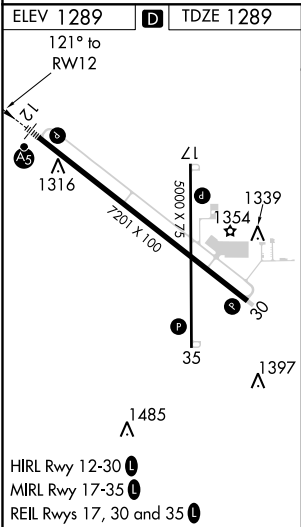
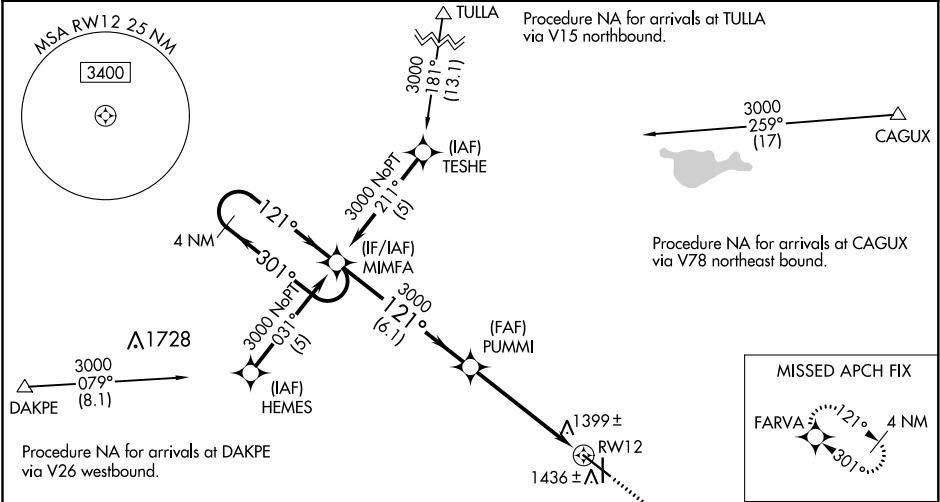
▲

For uncompensated Baro-VNAV systems, LNAV/VNAV NA below -17°C (2°F) or above 46°C (114°F). Baro-VNAV and VDP NA when using Mitchell Muni altimeter setting. When local altimeter setting not received, use Mitchell Muni altimeter setting and increase all DA 89 feet and all MDA 100 feet. Increase LNAV/VNAV all Cats, LNAV and Circling Cat C/D visibility ¼ mile. For inoperative MALSR when using Mitchell Muni altimeter setting increase LPV all Cats visibility to 1 mile. Circling Rwy 17, 35 NA at night.

MALSR

MISSED APPROACH:
Climb to 3000 direct CAVOR and on track 121° to FARVA and hold.

ASOS 118.125	MINNEAPOLIS CENTER 126.25 339.8	UNICOM 123.0 (CTAF) 0
------------------------	---	---------------------------------



<div>4 NM Holding Pattern</div> <div><div>3000</div><div>←301°</div><div>121°→</div></div> <div>GP 3.00° TCH 50</div>		<div>MIMFA</div>	<div>PUMMI</div>	<div><div>3000</div><div>↑</div></div> <div>CAVOR</div> <div>tr 121°</div> <div>FARVA</div>			
				<div>*1.4 NM to RW12</div> <div>*LNAV only</div> <div>RW12</div>			
		<div>6.1 NM</div>		<div>3.7 NM</div>		<div>1.4 NM</div>	
CATEGORY		A	B	C	D		
LPV	DA	1489-1/2 200 (200-1/2)					
LNAV/VNAV	DA	1699-1 410 (500-1)				1699-1 1/2 410 (500-1 1/2)	
LNAV	MDA	1780-1/2 491 (500-1/2)		1780-3/4 491 (500-3/4)		1780-1 491 (500-1)	
CIRCLING		1820-1 531 (600-1)		1820-1 1/2 531 (600-1 1/2)		1980-2 1/4 691 (700-2 1/4)	