

VORTAC HON	APP CRS	Rwy Idg	7201
117.6	124°	TDZE	1289
Chan 123		Apt Elev	1289

VOR RWY 12

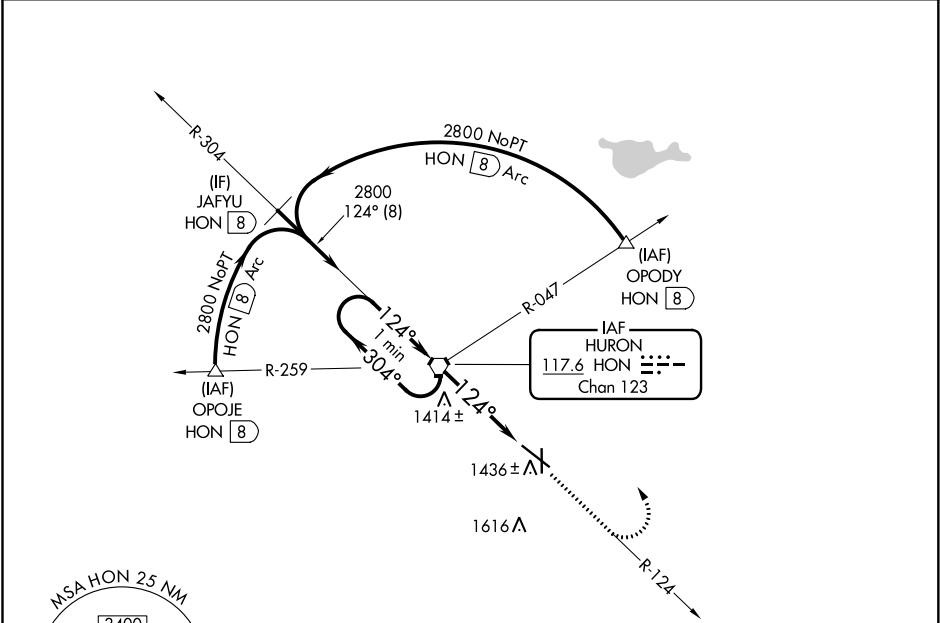
HURON RGNL (HON)

When local altimeter setting not received, use Mitchell Muni altimeter setting and increase all MDA 100 feet, increase S-12 Cat C visibility ¼ mile and Circling Cats C and D ¼ mile. For inoperative MALSR increase S-12 Cat D visibility 1¼ mile. VDP NA when using Mitchell Muni altimeter setting. Circling Rwy 17, 35 NA at night.

MALSR

MISSED APPROACH: Climb to 3000 via HON VORTAC R-124 then left turn direct HON VORTAC and hold.

ASOS	MINNEAPOLIS CENTER	UNICOM
118.125	126.25 339.8	123.0 (CTAF) 0



MSA HON 25 NM

3400

VGSI and descent angles not coincident (VGSI Angle 3.00/TCH 50).

One Minute Holding Pattern

2800

304°

124°

124°

3.32°

TCH 50

3.1 NM

1.1 NM

Δ 2177

3000

HON R-124

HON VORTAC

HON 3.1

HON 4.1

HON

ELEV 1289	D	TDZE 1289
124° 4.1 NM from FAF	HIRL Rwy 12-30	
	MIRL Rwy 17-35	
	REIL Rws 17, 30 and 35	

1316

1339

1354

1397

1485

5000 X 75

7201 X 100

35

30

35

30

35

30

FAF to MAP 4.1 NM

Knots	60	90	120	150	180
Min:Sec	4:06	2:44	2:03	1:38	1:22