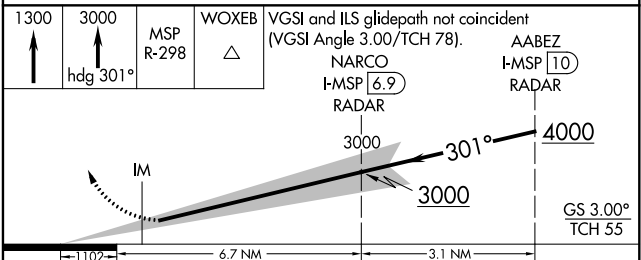
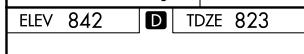


ILS RWY 30L (CAT II)
MINNEAPOLIS-ST PAUL INTL/WOLD-CHAMBERLAIN (MSP)

MISSED APPROACH: Climb to 1300 then climb to 3000 on heading 301° and MSP VOR/DME R-298 to WOXEB INT/ GEP VORTAC 11.8 DME and hold.

	CPDLC
--	-------



CATEGORY	A	B	C	D
S-ILS 30L	RA NA/12 100 DA 923			

CATEGORY II ILS - SPECIAL AIRCREW
& AIRCRAFT CERTIFICATION REQUIRED