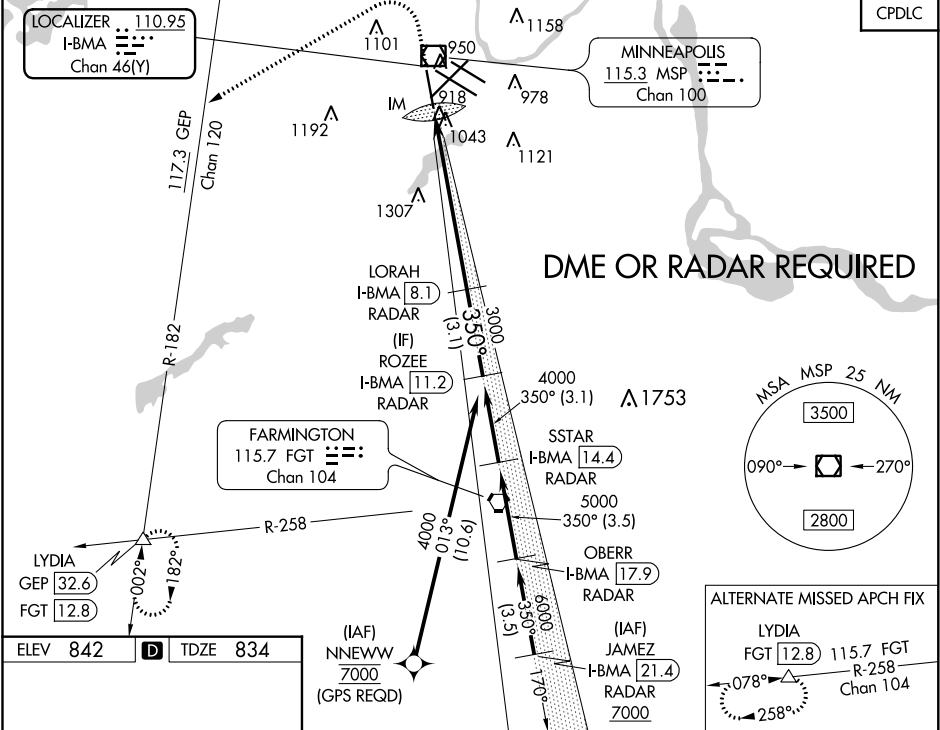


LOC/DME I-BMA	APP CRS	Rwy Idg	8000
<b>110.95</b>	<b>350°</b>	TDZE	<b>834</b>
Chan <b>46</b> (Y)		Apt Elev	<b>842</b>

ILS RWY 35 (SA CAT I)

MINNEAPOLIS-ST PAUL INTL/WOLD-CHAMBERLAIN (MSP)

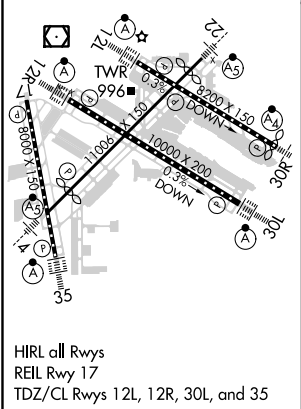
	D-ATIS		MINNEAPOLIS APP CON	MINNEAPOLIS TOWER	GND CON	CLNC DEL
	ARR <b>135.35</b>	<b>239.275</b>	<b>118.725 335.65</b> (Rwy 35) <b>119.3 335.65</b> (12L-30R, 4-22, 17) <b>126.95 335.65</b> (12R-30L)	<b>123.675 273.55</b> (17-35) <b>123.95 273.55</b> (12L-30R) <b>126.7 273.55</b> (12R-30L, 4-22)	<b>N 121.8 348.6</b> <b>S 121.9 348.6</b> <b>W 127.925 348.6</b>	<b>133.2</b>
	DEP <b>120.8</b>					CPDLC



ELEV 842

**D**

TDZE 834



1600	3000	GEP	LYDIA				
		hdg 240°					
VGSI and ILS glidepath not coincident (VGSI Angle 3.00°/TCH 71°).							
CATEGORY A B C D							
S-ILS 35 RA 157/14 150 DA 984							
SA CATEGORY I ILS - SPECIAL AIRCREW & AIRCRAFT CERTIFICATION REQUIRED							