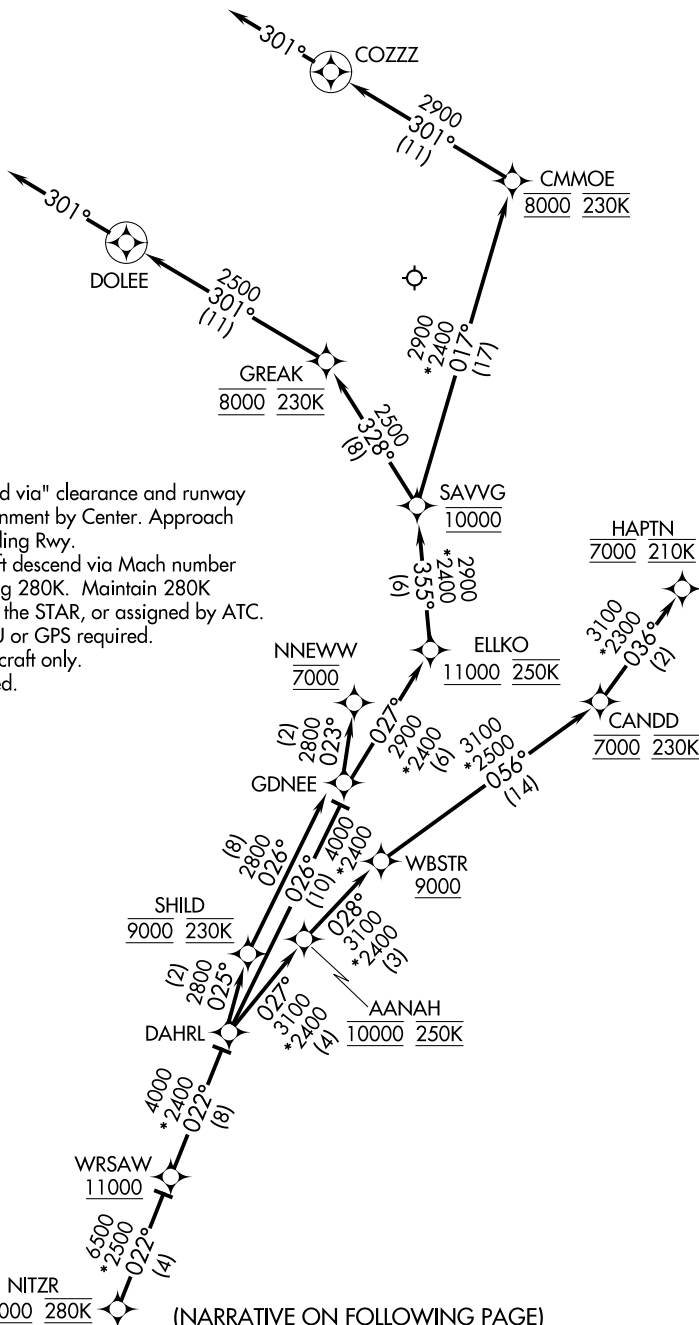


(NITZR.NITZR3) 18032

(NITZR.NITZR3) 18032 MINNEAPOLIS-ST PAUL INTL/WOLD-CHAMBERLAIN (MSP)
NITZR THREE ARRIVAL (RNAV) Arrival Routes AL-264 (FAA) MINNEAPOLIS, MINNESOTA

MINNEAPOLIS APP CON
135.475 335.5
D-ATIS ARR
135.35 239.275



NOTE: Expect "descend via" clearance and runway transition assignment by Center. Approach will assign landing Rwy.

NOTE: Turbojet aircraft descend via Mach number until intercepting 280K. Maintain 280K until slowed by the STAR, or assigned by ATC.

NOTE: DME/DME/IRU or GPS required.

NOTE: For turbojet aircraft only.

NOTE: RADAR required.

NOTE: RNAV 1.

NOTE: Chart not to scale.

(NARRATIVE ON FOLLOWING PAGE)

NITZR THREE ARRIVAL (RNAV)

NITZR THREE ARRIVAL (RNAV) **Arrival Routes** **MINNEAPOLIS, MINNESOTA**
(NITZR NITZR3) **MINNEAPOLIS-ST PAUL INTL/WOLD-CHAMBERLAIN (MSP)** **05JAN17**

(NITZR.NITZR3) 05JAN17

MINNEAPOLIS, MINNESOTA

MINNEAPOLIS-ST PAUL INTL/WOLD-CHAMBERLAIN (MSP)

NC-1, 31 DEC 2020 to 28 JAN 2021