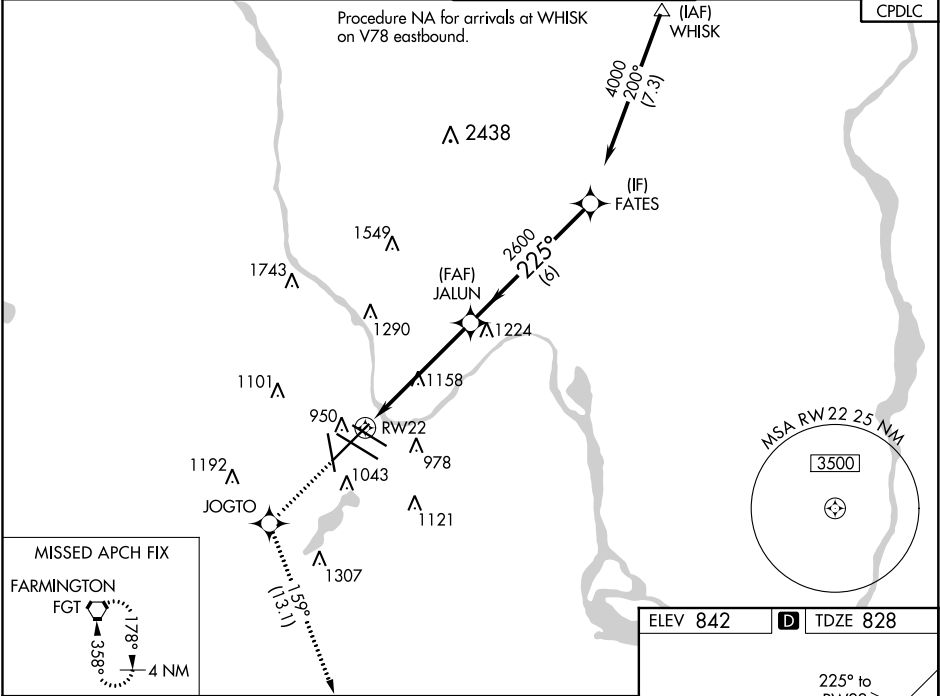


WAAS CH 60927 W22A	APP CRS 225°	Rwy Idg 10006 TDZE 828 Apt Elev 842
--	------------------------	--

RNAV (GPS) RWY 22

MINNEAPOLIS-ST PAUL INTL/WOLD-CHAMBERLAIN (MSP)

RNP APCH		MALSR		MISSED APPROACH: Climb to 3000 direct JOGTO and on track 159° to FGT VORTAC and hold.	
▼ Rwy 22 helicopter visibility reduction below RVR 4000 NA. For uncompensated Baro-VNAV systems, LNAV/VNAV NA below -27°C or above 54°C. For inop ALS, increase LPV Cat E visibility to RVR 5500, LNAV/VNAV all Cats visibility to RVR 6000 and LNAV Cat A/B visibility to RVR 5500, and Cat E to 1 3/4 SM.		A5			
D-ATIS		MINNEAPOLIS APP CON		MINNEAPOLIS TOWER	
ARR 135.35 239.275		118.725 335.65 (Rwy 35)		123.675 273.55 (17-35)	
DEP 120.8		119.3 335.65 (12L-30R, 4-22, 17)		123.95 273.55 (12L-30R)	
		126.95 335.65 (12R-30L)		126.7 273.55 (12R-30L, 4-22)	
				GND CON	
				N 121.8 348.6	
				S 121.9 348.6	
				W 127.925 348.6	
				CLNC DEL	
				133.2	



3000	JOGTO	fr 159°	FGT	VGSI and RNAV glidepath not coincident (VGSI Angle 3.00/TCH 61).	
* LNAV only		* 1.7 NM to RW22		FATES	
RW22		JALUN		4000	
		2600		2600	
				GP 3.00° TCH 55	
		1.7 NM		3.6 NM	
				6 NM	
CATEGORY	A	B	C	D	E
LPV DA	1190/40		362 (400-3/4)		
LNAV/VNAV DA	1227/45		399 (400-3/4)		
LNAV MDA	1420/40 592 (600-3/4)		1420-1 592 (600-1 1/4)		
CIRCLING	1420-1 578 (600-1)		1460-1 3/4 618 (700-1 3/4)	1660-2 3/4 818 (900-2 3/4)	1800-3 958 (1000-3)

