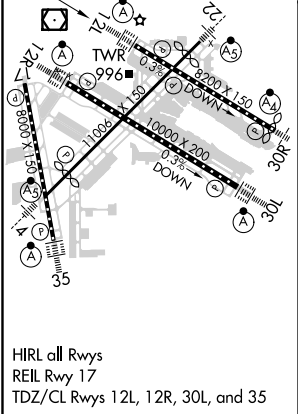
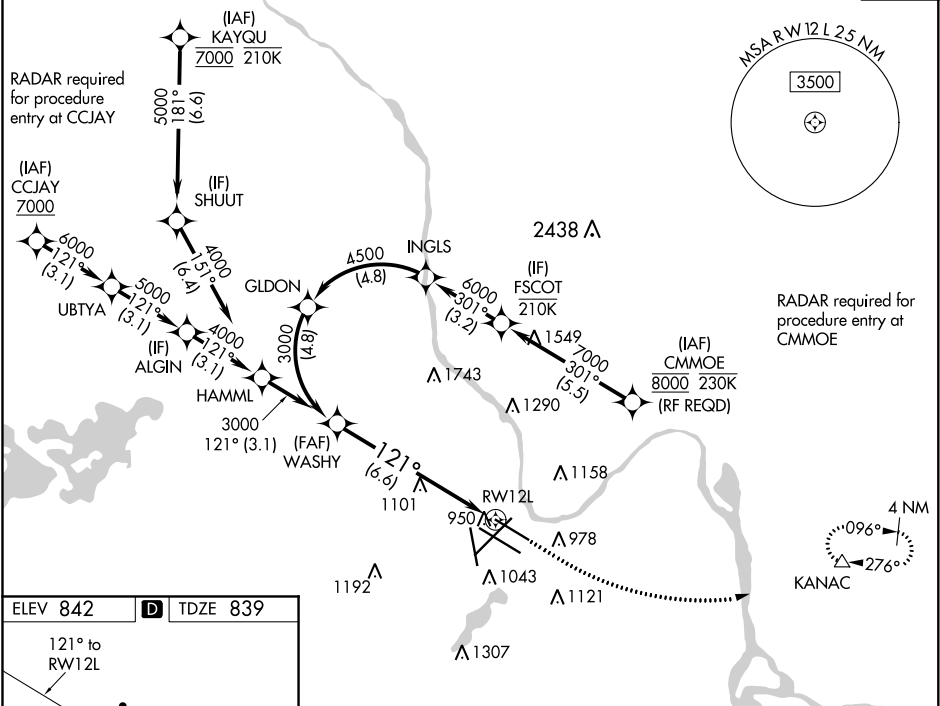


APP CRS	Rwy Idg	<b>7620</b>
<b>121°</b>	TDZE	<b>839</b>
	Apt Elev	<b>842</b>

**RNAV (RNP) Y RWY 12L**  
MINNEAPOLIS-ST PAUL INTL/WOLD-CHAMBERLAIN (MSP)

<b>▼</b> For uncompensated Baro-VNAV systems, procedure NA below -20°C (-4°F) or above 54°C (130°F). GPS required.	ALSIF-2	MISSED APPROACH: Climb to 1300 then climbing left turn to 3000 direct KANAC and hold.
--	---------	---

D-ATIS	MINNEAPOLIS APP CON	MINNEAPOLIS TOWER	GND CON	CLNC DEL
ARR <b>135.35 239.275</b>	<b>118.725 335.65</b> (Rwy 35)	<b>123.675 273.55</b> (17-35)	<b>N 121.8 348.6</b>	<b>133.2</b>
DEP <b>120.8</b>	<b>119.3 335.65</b> (12L-30R, 4-22, 17)	<b>123.95 273.55</b> (12L-30R)	<b>S 121.9 348.6</b>	
	<b>126.95 335.65</b> (12R-30L)	<b>126.7 273.55</b> (12R-30L, 4-22)	<b>W 127.925 348.6</b>	CPDLC



WASHY	See planview for multiple IF locations.	1300	3000	KANAC
3000				
GP 3.00°				
TCH 52				
6.6 NM				
CATEGORY	A	B	C	D
RNP 0.15 DA	1150/24	311 (400-½)		
RNP 0.30 DA	1241/45	402 (400-¾)		
<b>AUTHORIZATION REQUIRED</b>				