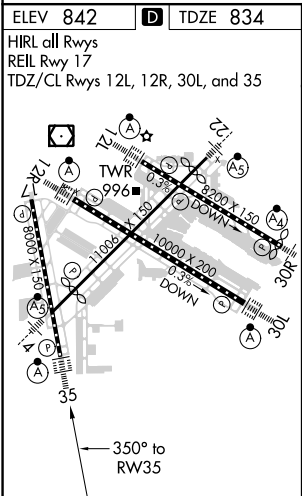
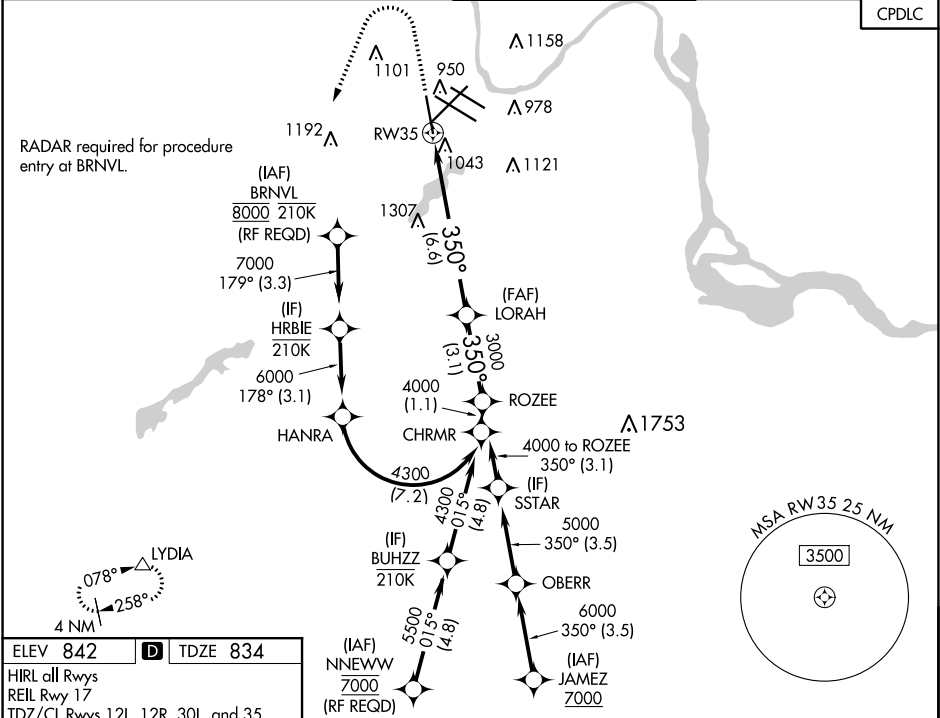


APP CRS	Rwy Idg	8000
350°	TDZE	834
	Apt Elev	842

RNAV (RNP) Y RWY 35

MINNEAPOLIS-ST PAUL INTL/WOLD-CHAMBERLAIN (MSP)

<div><div>▼</div><div>For uncompensated Baro-VNAV systems, procedure NA below -19°C (-2°F) or above 54°C (130°F). For inop ALSF, increase RNP 0.30 all Cats visibility to 1½ miles. GPS required.</div></div>		<div><div>ALSF-2</div><div></div></div>	<div>MISSED APPROACH: Climb to 1300 then climbing left turn to 3000 direct LYDIA and hold.</div>	
<div>D-ATIS</div> <div>ARR 135.35 239.275</div> <div>DEP 120.8</div>	<div>MINNEAPOLIS APP CON</div> <div>118.725 335.65 (Rwy 35)</div> <div>119.3 335.65 (12L-30R, 4-22, 17)</div> <div>126.95 335.65 (12R-30L)</div>	<div>MINNEAPOLIS TOWER</div> <div>123.675 273.55 (17-35)</div> <div>123.95 273.55 (12L-30R)</div> <div>126.7 273.55 (12R-30L, 4-22)</div>	<div>GND CON</div> <div>N 121.8 348.6</div> <div>S 121.9 348.6</div> <div>W 127.925 348.6</div>	<div>CLNC DEL</div> <div>133.2</div>
				<div>CPDLC</div>



<div>1300 3000 LYDIA</div> <div>VGSI and RNAV glidepath not coincident. (VGSI Angle 3.00/TCH 71).</div>		<div>See planview for multiple IF locations.</div>	
<div></div>			