

WAAS CH 45525 W12B	APP CRS 121°	Rwy Idg TDZE Apt Elev	7620 841 842
--	------------------------	-----------------------------	---

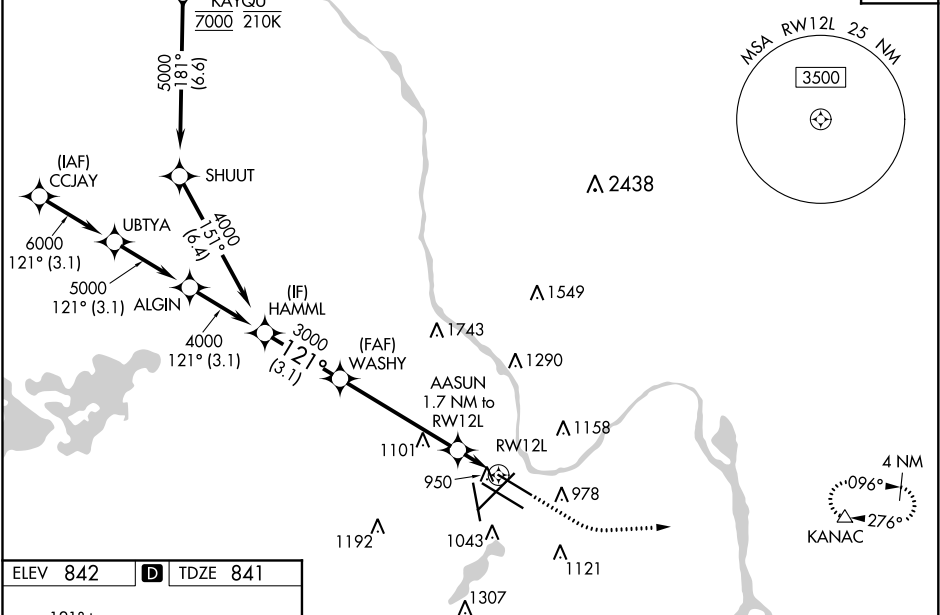
RNAV (GPS) Z RWY 12L
MINNEAPOLIS-ST PAUL INTL/WOLD-CHAMBERLAIN (MSP)

⚠ For uncompensated Baro-VNAV systems, LNAV/VNAV NA below -20°C (-4°F) or above 54°C (130°F). Simultaneous approach authorized with Rwy 12R. Use of FD or AP providing RNAV track guidance required during simultaneous operations. LNAV procedure NA during simultaneous operations. DME/DME RNP-0.3 NA. For inop ALS, increase LPV Cat E visibility to RVR 4000, LNAV/VNAV Cat E visibility to 1 1/2 SM, LNAV Cats C/D/E visibility to RVR 6000.

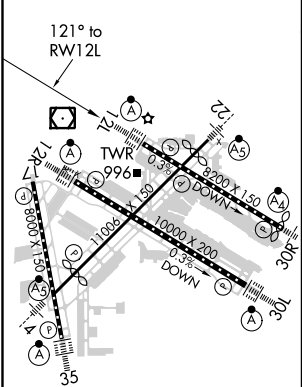
ALSf-2

MISSED APPROACH:
Climb to 1300, then climbing left turn to 3000 direct KANAC and hold.

D-ATIS ARR 135.35 239.275 DEP 120.8	MINNEAPOLIS APP CON 118.725 335.65 (Rwy 35) 119.3 335.65 (12L-30R, 4-22, 17) 126.95 335.65 (12R-30L)	MINNEAPOLIS TOWER 123.675 273.55 (17-35) 123.95 273.55 (12L-30R) 126.7 273.55 (12R-30L, 4-22)	GND CON N 121.8 348.6 S 121.9 348.6 W 127.925 348.6	CLNC DEL 133.2
CPDLC				



ELEV 842	D	TDZE 841
----------	----------	----------



HIRL all Rwys
REIL Rwy 17
TDZ/CL Rwys 12L, 12R, 30L, and 35

VGSI and RNAV glidepath not coincident (VGSI Angle 3.00/TCH 79°).						<div><div>1300</div><div>3000</div><div>KANAC</div></div>	
<div><div>HAMML</div><div>WASHY</div><div>AASUN 1.7 NM to RW12L</div></div>						*LNAV only	
<div><div>4000</div><div>3000</div><div>121°</div><div>*1420</div><div>*1.1 NM to RW12L</div><div>RW12L</div></div>							
GP 3.00° TCH 52							
<div><div>3.1 NM</div><div>4.9 NM</div><div>0.6 NM</div><div>1.1 NM</div></div>							
CATEGORY	A	B	C	D	E		
LPV DA	1041/18 200 (200-½)						
LNAV/VNAV DA	1211/40 370 (400-¾)						
LNAV MDA	1260/24 419 (500-½)		1260/40 419 (500-¾)				
<div><div>C</div><div>CIRCLING</div></div>	1360-1 518 (600-1)		1460-1¾ 618 (700-1¾)	1660-2¾ 818 (900-2¾)	1800-3 958 (1000-3)		