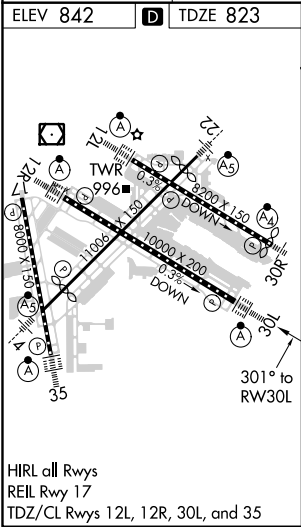
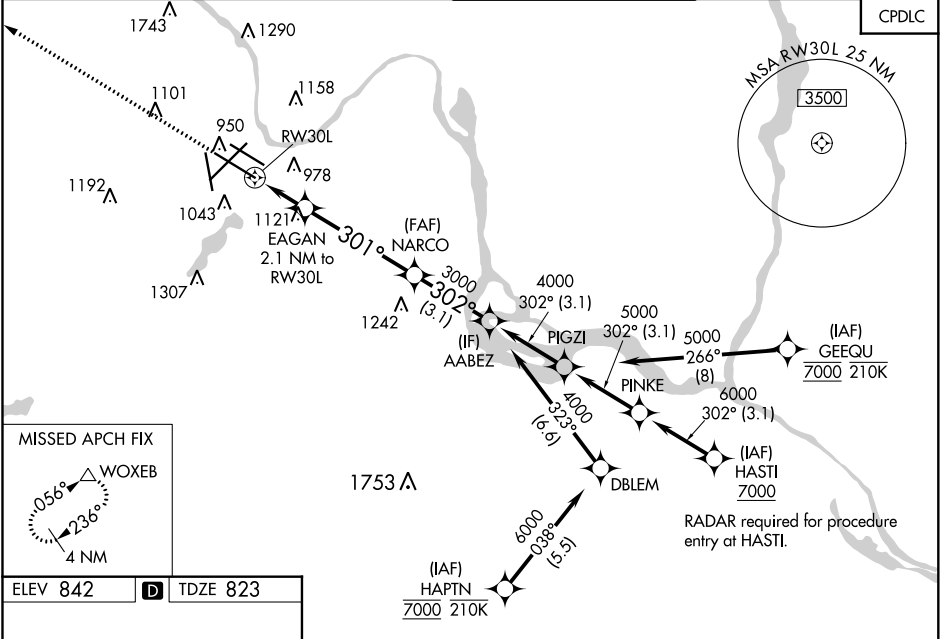


WAAS CH 56225 W30A	APP CRS 301°	Rwy Idg 10000 TDZE 823 Apt Elev 842
--	------------------------	--

RNAV (GPS) Z RWY 30L
MINNEAPOLIS-ST PAUL INTL/WOLD-CHAMBERLAIN (MSP)

<div>▼</div> <div>▲</div>	For uncompensated Baro-VNAV systems, LNAV/VNAV NA below -19°C (-2°F) or above 54°C (130°F). DME/DME RNP-0.3 NA. Simultaneous approaches authorized with Rwy 30R and ILS V RWY 35 (CONVERGING). Use of FD or AP providing RNAV track guidance required during simultaneous operations. LNAV procedure NA during simultaneous operations. For inop ALS, increase LPV Cat E visibility to RVR 4000, increase LNAV/VNAV Cat E visibility to RVR 5000, and LNAV Cat E visibility to 1 3/8 SM.			ALSIF-2 <div><div>Ⓐ</div><div></div></div>	MISSED APPROACH: Climb to 3000 direct WOXEB and hold.
	D-ATIS ARR 135.35 239.275 DEP 120.8	MINNEAPOLIS APP CON 118.725 335.65 (Rwy 35) 119.3 335.65 (12L-30R, 4-22, 17) 126.95 335.65 (12R-30L)	MINNEAPOLIS TOWER 123.675 273.55 (17-35) 123.95 273.55 (12L-30R) 126.7 273.55 (12R-30L, 4-22)	GND CON N 121.8 348.6 S 121.9 348.6 W 127.925 348.6	CLNC DEL 133.2



3000 ↑ *LNAV only		WOXEB △ VGSI and RNAV glidepath not coincident (VGSI Angle 3.00° TCH 78).		NARCO 3000		AABEZ 4000					
RW30L ↻		*1.2 NM to RW30L ↓ EAGAN 2.1 NM to RW30L		301° 302° 3000		GP 3.00° TCH 55					
1.2 NM		0.9 NM		4.6 NM		3.1 NM					
CATEGORY		A		B		C		D		E	
LPV DA				1023/18		200 (200-½)					
LNAV/VNAV DA				1130/24		307 (300-½)					
LNAV MDA		1280/24		457 (500-½)		1280/45		457 (500-¾)			
CIRCLING		1360-1		518 (600-1)		1460-1¾ 618 (700-1¾)		1660-2¾ 818 (900-2¾)		1800-3 958 (1000-3)	

NC-1, 31 DEC 2020 to 28 JAN 2021

NC-1, 31 DEC 2020 to 28 JAN 2021