

(SKETR.SKETR5) 17173
SKETR FIVE ARRIVAL

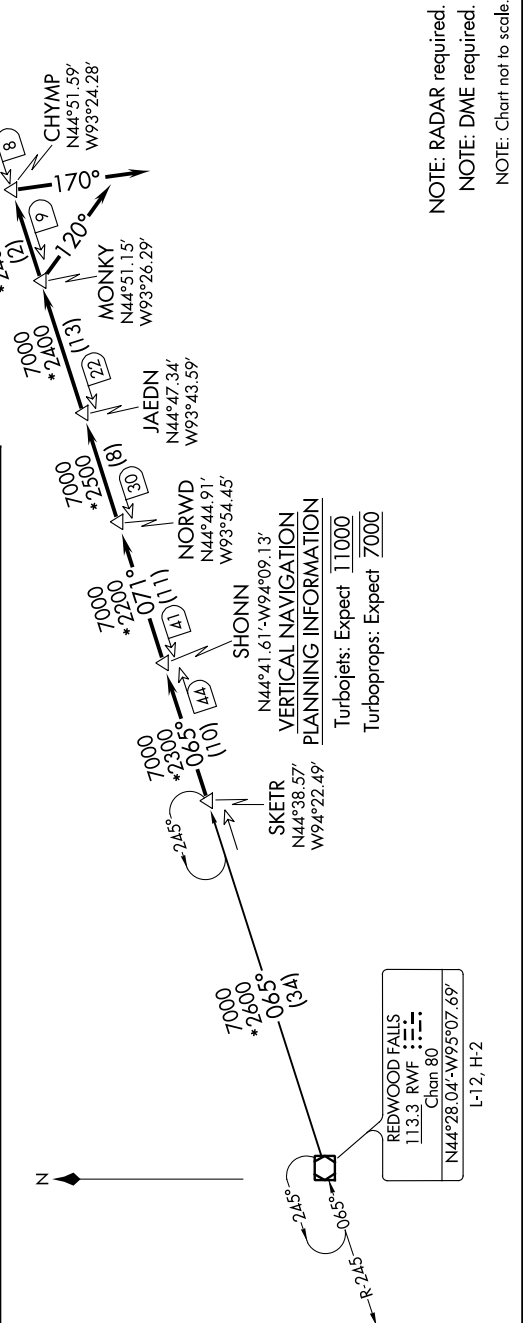
MINNEAPOLIS-ST PAUL INTL/WOLD-CHAMBERLAIN (MSP)
AL-264 (FAA) MINNEAPOLIS, MINNESOTA

ARRIVAL ROUTE DESCRIPTION

REDWOOD FALLS TRANSITION (RWF.SKETR5): From over RWF VOR/DME on RWF R-065 to SKETR/34 DME. Thence
From over SKETR/RWF 34 DME via RWF R-065 to SHONN/RWF 44 DME, then via MSP R-251 to NORWD/MSP 30 DME, then via MSP R-251 to JAEDN/MSP 22 DME, then via MSP R-251 to MONKY/MSP 9 DME, thence
LANDING MSP RUNWAY 30L/R: depart MONKY/MSP 9 DME heading 120° for RADAR vectors to final approach course.
LANDING MSP RUNWAY 35: depart MONKY/MSP 9 DME via MSP R-251 to CHYMP/MSP 8 DME, then via heading 170° for RADAR vectors to final approach course.
ALL OTHER RUNWAYS: via RADAR vectors to final approach course.

MINNEAPOLIS APP CON
126.95 335.5
D-ATIS ARR
135.35 239.275

MINNEAPOLIS
115.3 MSP
Chen 100



SKETR FIVE ARRIVAL
(SKETR.SKETR5) 10JAN13

MINNEAPOLIS, MINNESOTA
MINNEAPOLIS-ST PAUL INTL/WOLD-CHAMBERLAIN (MSP)