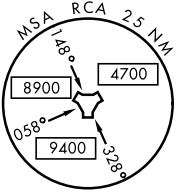
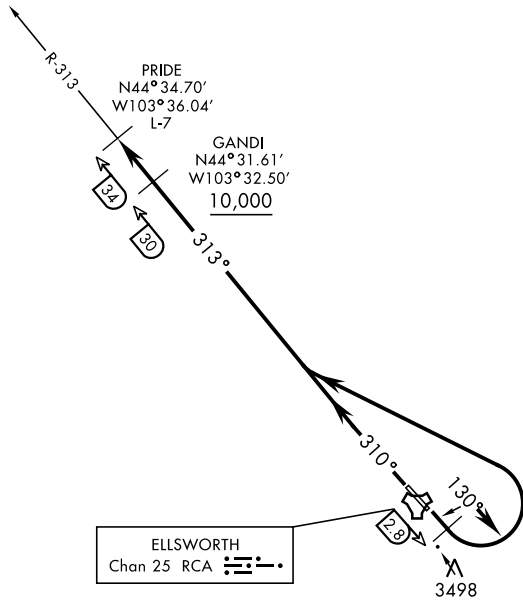


ATIS ★120.625 269.9	SHL-343 [USAF]	Rwy	Knots	60	120	180	240	300	360
GND CON		13	V/V(fpm)	221	442	663	884	1105	1326
121.8 275.8		31	V/V(fpm)	236	472	708	944	1180	1416
ELLSWORTH TOWER ★									
126.05 253.5		ATC Climb Rate to 10,000							
ELLSWORTH DEP CON									
119.5 289.4									
DENVER CENTER									
127.95 338.2									
ELLSWORTH APP CON									
119.5 259.1									

CAUTION:
Traffic transiting
IR-492 between
10,000 and 16,000.



DEPARTURE ROUTE DESCRIPTION

TAKE-OFF RWY 13: Track 130° until RCA TACAN 2.8 DME. Turn left to intercept RCA R-313 outbound to PRIDE. Cross GANDI at or above 10,000.

TAKE-OFF RWY 31: Track 310° to intercept RCA TACAN R-313 outbound to PRIDE. Cross GANDI at or above 10,000.