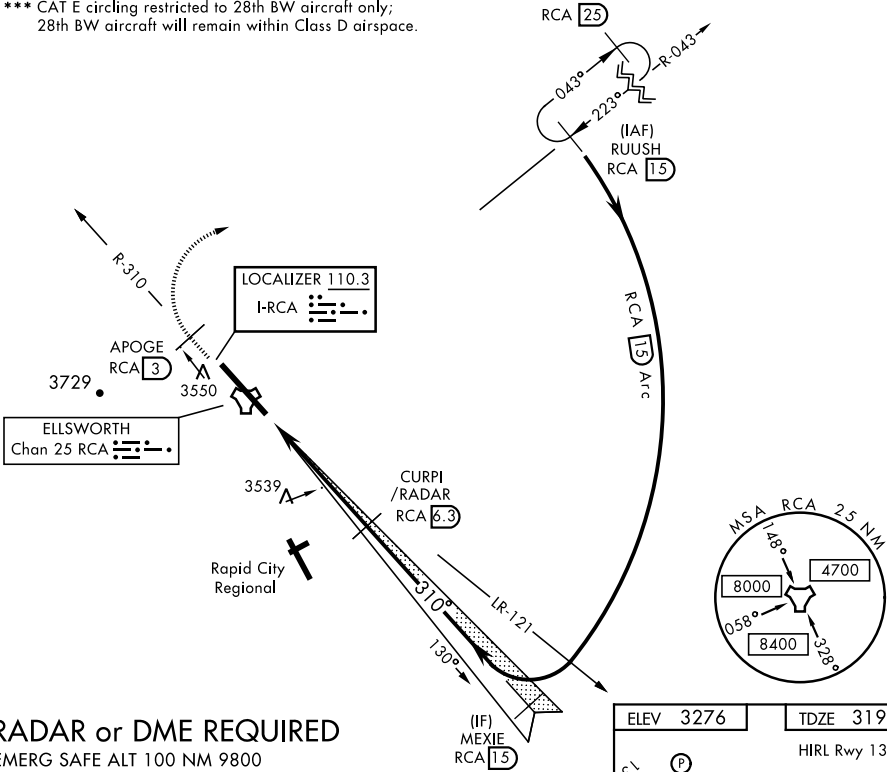


RAPID CITY, SOUTH DAKOTA

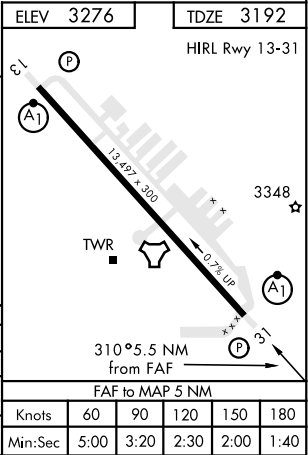
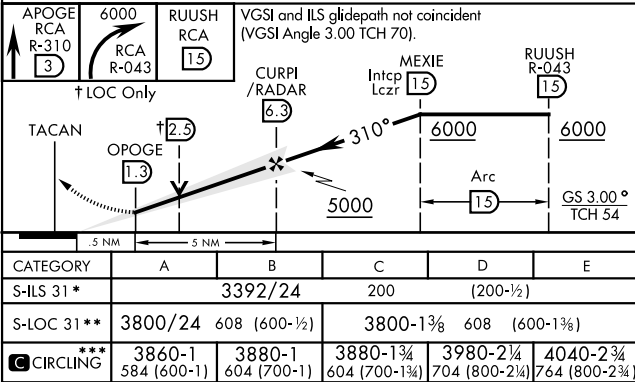
ILS or LOC Y RWY 31

LOC I-RCA 110.3	APCH CRS 310°	Rwy Idg 13,497 TDZE 3192 Arpt Elev 3276	AL-343 [USAF]	ELLSWORTH AFB (KRCA)
▼ * When ALS inop, increase RVR to 40 and vis to ¾ mile. ** When ALS inop, increase CAT AB RVR to 55 and vis to 1 mile, CAT CDE vis to 1¾ miles.			ALSF-1 	MISSED APPROACH: Track outbound RCA R-310 to 3 DME (APOGE), then turn right to join RCA R-043 outbound to RCA 1.5 DME (RUUSH) and hold. Maintain 6000.
ATIS ★ 120.625 269.9	ELLSWORTH APP CON 119.5 259.1	ELLSWORTH TOWER ★ 126.05 253.5	GND CON 121.8 275.8	

*** CAT E circling restricted to 28th BW aircraft only;
28th BW aircraft will remain within Class D airspace.



RADAR or DME REQUIRED
EMERG SAFE ALT 100 NM 9800



RAPID CITY, SOUTH DAKOTA
Amdt 1 15SEP16

44°09'N-103°06'W

ELLSWORTH AFB (KRCA)

ILS or LOC Y RWY 31

NC-1, 31 DEC 2020 to 28 JAN 2021

NC-1, 31 DEC 2020 to 28 JAN 2021