

RAPID CITY, SOUTH DAKOTA

TACAN-A

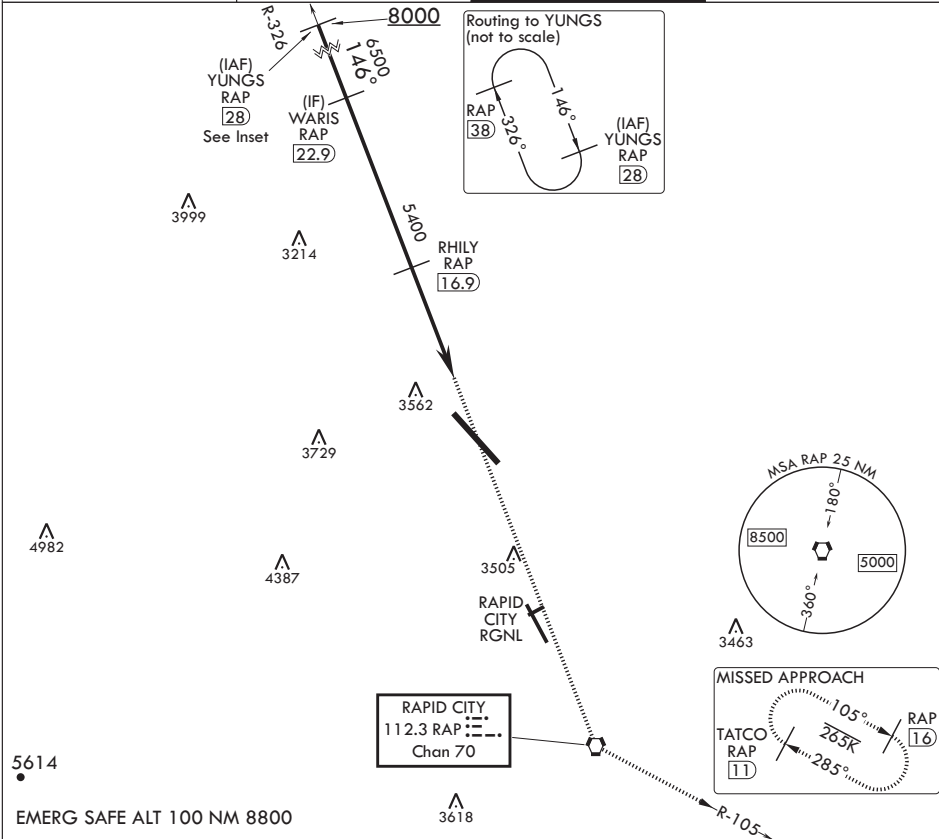
VORTAC RAP 112.3 Chan 70	APCH CRS 146°	Rwy Idg TDZE Arprt Elev	N/A N/A 3276
--------------------------------	------------------	-------------------------------	--------------------

AL-343 (USAF)

ELLSWORTH AFB (KRCA)

<b>⚠</b> * CAT E circling restricted to 28th BW aircraft only; 28th BW aircraft will remain within Class D airspace.	MISSED APPROACH: Track inbound RAP R-326 to RAP VORTAC then turn left to join RAP R-105 outbound to 11 DME and hold. Maintain 6000.
--	---

ATIS★ 120.625 269.9	APP CON 119.5 259.1	TOWER★ 126.05 253.5	GND CON 121.8 275.8
------------------------	------------------------	------------------------	------------------------



YUNGS

28

8000

WARIS

22.9

6500

2.91°

TCH unk

146°

RHILY

16.9

5400

3.9 NM

ZEVAK

13

VORTAC

6000

RAP

R-326

RAP

R-105

TATCO

RAP

11

ELEV 3276

146° to VORTAC

3379

3370

1.3407 x 300

TWR

0.7% UP

HIRL Rwy 13-31

CATEGORY	A	B	C	D	E
CIRCLING*	3860-1 3/8 584 (600-1 3/8)	3880-1 3/8 604 (700-1 3/8)	3880-1 3/4 604 (700-1 3/4)	3980-2 1/4 704 (800-2 1/4)	4040-2 3/4 764 (800-2 3/4)

RAPID CITY, SOUTH DAKOTA

44°09'N - 103°06'W

ELLSWORTH AFB (KRCA)

Amdt 2 22JUN17

TACAN-A

NC-1, 31 DEC 2020 to 28 JAN 2021

NC-1, 31 DEC 2020 to 28 JAN 2021