

WAAS CH <b>99323</b> <b>W21A</b>	APP CRS <b>210°</b>	Rwy Idg <b>8999</b> TDZE <b>1430</b> Apt Elev <b>1430</b>
--	------------------------	---

RNAV (GPS) RWY 21  
JOE FOSS FIELD (FSD)

JOE FOSS FIELD (FSD)

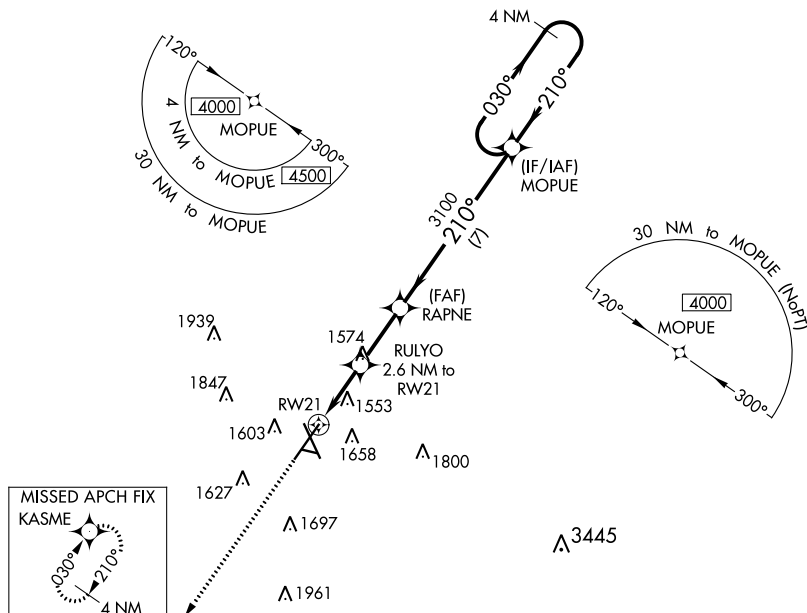
**V**  
**A**  
**ASR**  
**31°C**

For uncompensated Baro-VNAV systems, LNAV/VNAV NA below -22°C (-7°F) or above 54°C (130°F). DME/DME RNP-0.3 NA. For inop ALS, increase LPV all Cats visibility to RVR 4000 and LNAV/VNAV all Cats visibility to RVR 4500.

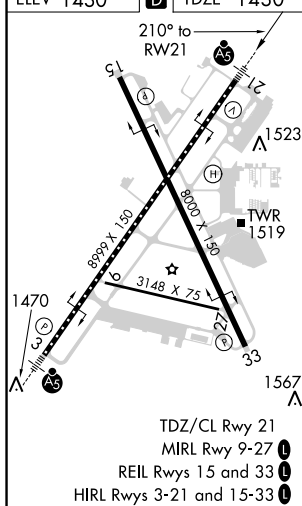
MALSR

**MISSED APPROACH:**  
Climb to 4000 direct  
KASME and hold.

ATIS 126.6	SIoux FALLS APP CON* 125.8 284.725	SIoux FALLS TOWER* 118.3 (CTAF) 0 257.8	GND CON 121.9 348.6	UNICOM 122.95
---------------	---------------------------------------	--	------------------------	------------------



FLFY 1430		TDZE 1430
-----------	---	-----------



<div style="display: flex; justify-content: space-around; align-items: center;"> <div style="text-align: center;"> <b>4000</b>    <b>*LNAV only.</b> </div> <div style="text-align: center;"> <b>KASME</b>  </div> </div>		<div style="display: flex; justify-content: space-between; align-items: flex-start;"> <div style="text-align: center;"> <b>RW21</b>    <b>*1.1 NM to RW21</b> </div> <div style="text-align: center;"> <b>RULYO</b>  <b>2.6 NM to RW21</b> </div> <div style="text-align: center;"> <b>RAPNE</b>  <b>3100</b>  <b>*2300</b> </div> <div style="text-align: center;"> <b>MOPEUE</b>  <b>4 NM Holding Pattern</b> </div> </div>			
		<div style="display: flex; justify-content: space-around; align-items: center;"> <div style="text-align: center;"> <b>210°</b>  <b>3100</b> </div> <div style="text-align: center;"> <b>030°</b>  <b>210°</b>  <b>4000</b> </div> </div>			
<div style="display: flex; justify-content: space-around; align-items: center;"> <div style="text-align: center;"> <b>GP 3.00°</b>  <b>TCH 49</b> </div> </div>					
<div style="display: flex; justify-content: space-around; align-items: center;"> <div style="text-align: center;"> <b>1.1 NM</b> </div> <div style="text-align: center;"> <b>1.5</b> </div> <div style="text-align: center;"> <b>2.5 NM</b> </div> <div style="text-align: center;"> <b>7 NM</b> </div> </div>					
CATEGORY	A		B	C	D
LPV DA			1630/18	200 (300-½)	
LNAV/VNAV DA			1704/24	274 (300-½)	
LNAV MDA	1820/24		390 (400-½)	1820/35	390 (400-⅝)
<b>C</b> CIRCLING	1960-1 530 (600-1)	1980-1 550 (600-1)	2060-1¾ 630 (700-1¾)	2200-2 ½ 770 (800-2 ½)	