




WAAS CH 97722 W03A	APP CRS 030°	Rwy Idg 8999 TDZE 1424 Apt Elev 1430
--	------------------------	---

RNAV (GPS) RWY 3

JOE FOSS FIELD (FSD)

RNP APCH.

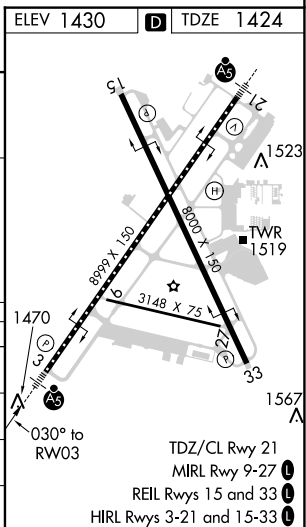
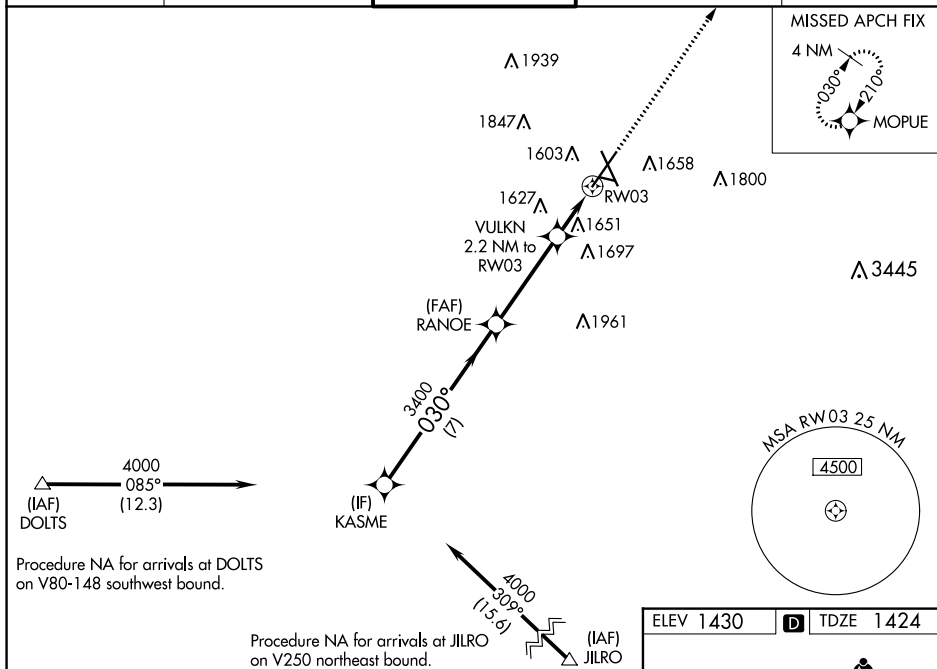
	For uncompensated Baro-VNAV systems, LNAV/VNAV NA below
	-17°C (2°F) or above 54°C (130°F). For inop ALS, increase
ASR	LNAV/VNAV all Cats visibility to RVR 4500 and LNAV Cats C/D
	visibility to 1 3/8 SM.
-31°C	

MALSR



MISSED APPROACH: Climb to 4000
direct MOPUE and hold.

ATIS 126.6	SIoux FALLS APP CON★ 125.8 284.725	SIoux FALLS TOWER★ 118.3 (CTAF) 0 257.8	GND CON 121.9 348.6	UNICOM 122.95
---------------	---------------------------------------	--	------------------------	------------------



RNAV (GPS) RWY 3