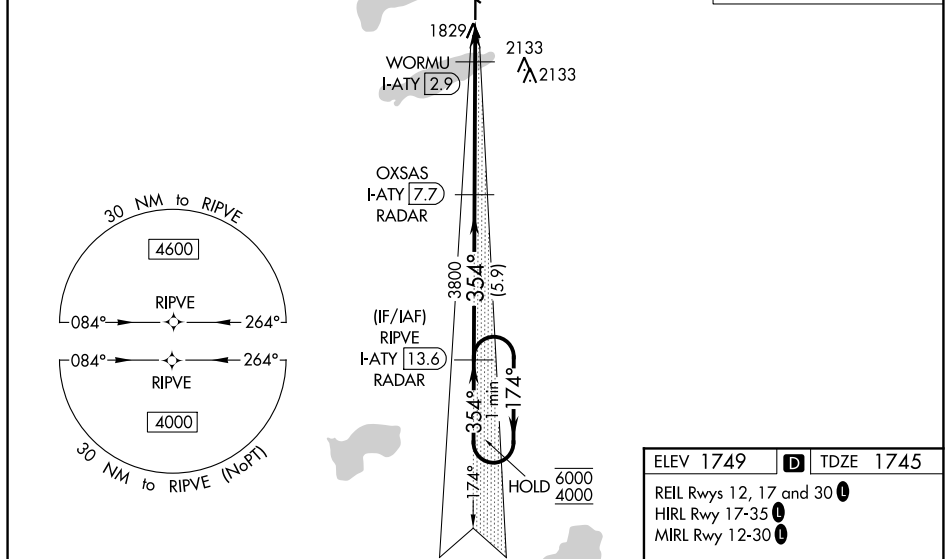


ILS or LOC RWY 35  
WATERTOWN RGNL (ATY)

**MISSED APPROACH:** Climb to 2500 then climbing left turn to 4500 on heading 330° and ATY R-288 to WICKA/ATY 15 DME and hold.



Figure 1: Example of a missed APCH fix. The diagram illustrates a flight path starting from a 'LOCALIZER 111.9' (Chan 56) and heading towards 'WICKA ATY 15'. A 'MISSING APCH FIX' is indicated by a dashed line. An 'ALTERNATE MISSING APCH FIX' is shown as a dashed line branching off. A 'WATERTOWN 116.6 ATY' (Chan 113) is also shown. The diagram includes various navigation aids like 'R-288', 'R-109', and 'R-1960'.



### One Minute Holding Pattern

RIPVE  
I-ATY 13.6  
RADAR

OXSAS  
I-ATY 7.7  
RADAR

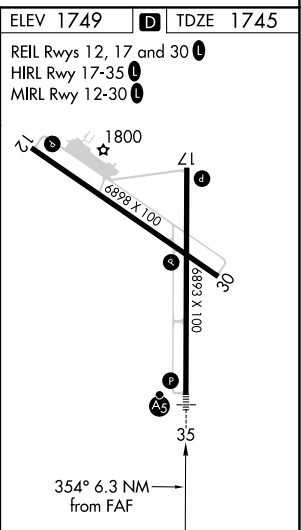
2500 ↑	4500 hdg 330°	ATY R-288	WICKA △
-----------	---------------------	--------------	------------

6000	
4000	
GS 3.0	
TCH 5	

3800

WORMU \*LOC only  
I-ATY \*I-ATY  
I-ATY

CATEGORY	A	B	C	D
S-ILS 35	1945- $\frac{1}{2}$ 200 (200- $\frac{1}{2}$ )			
S-LOC 35	2080- $\frac{1}{2}$ 335 (400- $\frac{1}{2}$ )			
<b>C</b> CIRCLING	2260-1 511 (600-1)	2500-2 $\frac{1}{4}$ 751 (800-2 $\frac{1}{4}$ )	2500-2 $\frac{1}{2}$ 751 (800-2 $\frac{1}{2}$ )	



NC-1, 31 DEC 2020 to 28 JAN 2021

NC-1, 31 DEC 2020 to 28 JAN 2021