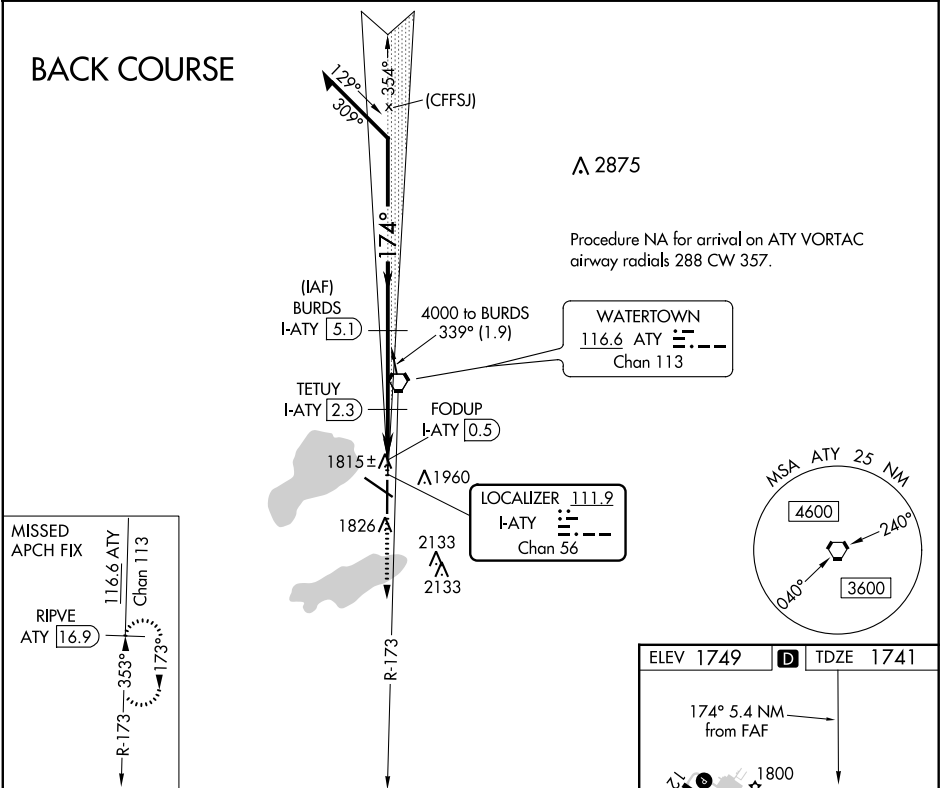


LOC/DME I-ATY 111.9 Chan 56	APP CRS 174°	Rwy Idg TDZE Apt Elev	6893 1741 1749
---	------------------------	-----------------------------	---

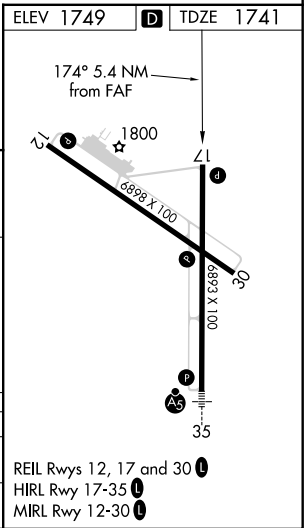
LOC BC RWY 17
WATERTOWN RGNL (ATY)

DME required.	MISSED APPROACH: Climb to 4000 on ATY VORTAC R-173 to RIPVE/ATY VORTAC 16.9 DME and hold.
---------------	---

ASOS 126.625	MINNEAPOLIS CENTER 128.5 306.2	UNICOM 123.05 (CTAF) 0
------------------------	--	----------------------------------



Use I-ATY DME when on the localizer course.	BURDS I-ATY 5.1	4000	ATY R-173	RIPVE ATY 16.9
Remain within 10 NM	354°	174°	3000	2600
Disregard GS indications.	3500	2600	2.8 NM	1.8
VGSI and descent angles not coincident (VGSI Angle 3.00/TCH 35)	3.00° TCH 45	FODUP I-ATY 0.5	0.8	
CATEGORY	A	B	C	D
S-17	2080-1	339 (400-1)		
CIRCLING	2260-1 511 (600-1)	2500-2¼ 751 (800-2¼)	2500-2½ 751 (800-2½)	



NC-1, 31 DEC 2020 to 28 JAN 2021

NC-1, 31 DEC 2020 to 28 JAN 2021