

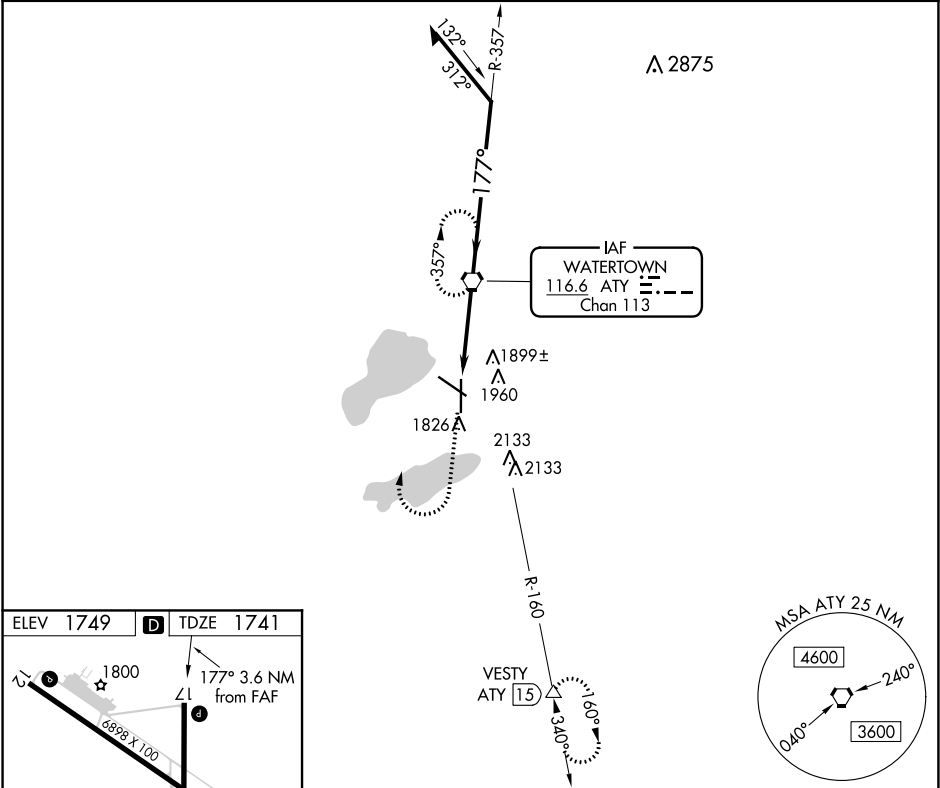
VORTAC ATY 116.6 Chan 113	APP CRS 177°	Rwy Idg TDZE 1741 Apt Elev 1749
---	------------------------	---

VOR or TACAN RWY 17
WATERTOWN RGNL (ATY)

⚠ Rwy 17 helicopter visibility reduction below 3/4 SM NA. When local altimeter setting not received, use Brookings altimeter setting and increase all MDAs 120 feet; increase Circling Cat C and D visibility 1/4 SM. VDP NA when using Brookings altimeter setting.

MISSED APPROACH: Climb to 2400 then climbing right turn to 4000 direct ATY VORTAC and hold. (TACAN aircraft climb to 5000 on ATY VORTAC R-160 to VESTY/15 DME and hold south, right turn, 340° inbound.)

ASOS 126.625	MINNEAPOLIS CENTER 128.5 306.2	UNICOM 123.05 (CTAF) 📻
------------------------	--	---



ELEV 1749	D	TDZE 1741
-----------	----------	-----------

REIL Rwy 12, 17 and 30 **📻**
HIRL Rwy 17-35 **📻**
MIRL Rwy 12-30 **📻**

FAF to MAP 3.6 NM

Knots	60	90	120	150	180
Min:Sec	3:36	2:24	1:48	1:26	1:12

2400	4000	ATY	ATY VORTAC	VGSI and descent angles not coincident (VGSI Angle 3.00/TCH 35). Remain within 10 NM
ATY 3.6	ATY 2.2	≤ 3.21° TCH 45	3000	357° 177° 4000
1.3 NM		2.2 NM		
CATEGORY	A	B	C	D
S-17	2200-1	460 (500-1)	2200-1 1/4 460 (500-1 1/4)	2200-1 1/2 460 (500-1 1/2)
📻 CIRCLING	2260-1	511 (600-1)	2500-2 1/4 751 (800-2 1/4)	2500-2 1/2 751 (800-2 1/2)

NC-1, 31 DEC 2020 to 28 JAN 2021

NC-1, 31 DEC 2020 to 28 JAN 2021