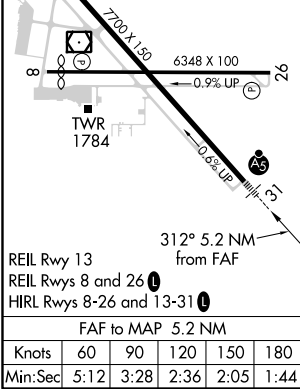
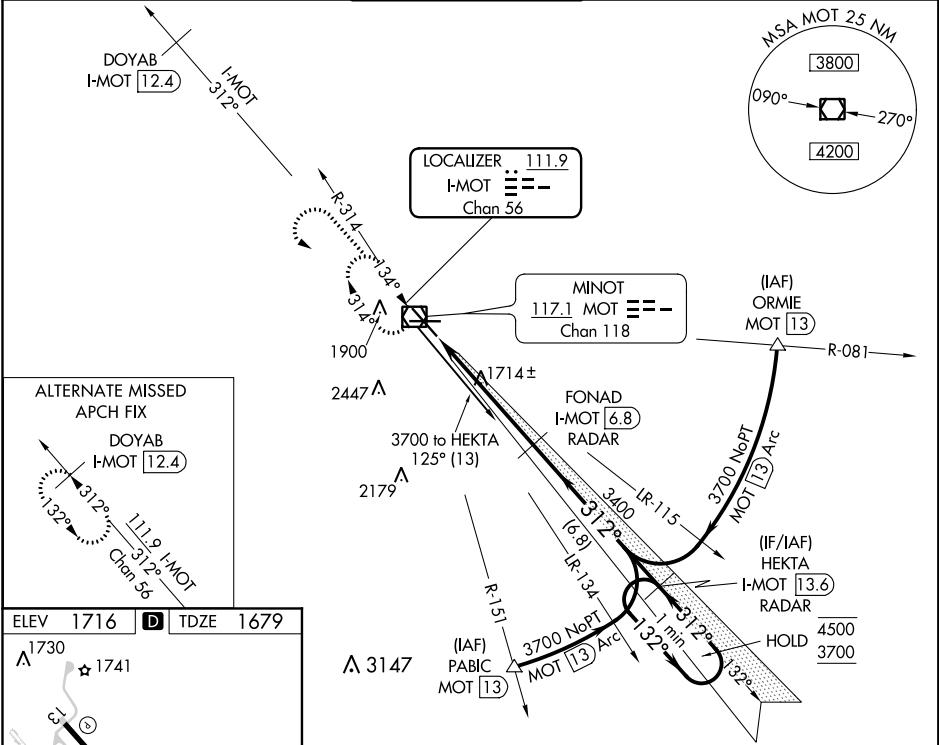




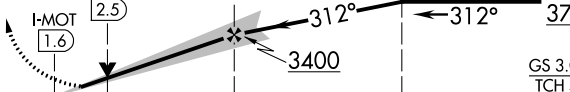
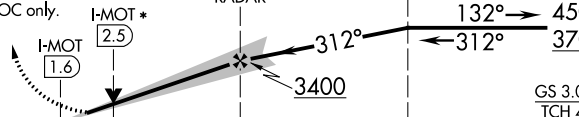
LOC/DME I-MOT <b>111.9</b> Chan <b>56</b>	APP CRS <b>312°</b>	Rwy Idg TDZE Apt Elev	<b>7700</b> <b>1679</b> <b>1716</b>
---	------------------------	-----------------------------	---

ILS or LOC RWY 31  
MINOT INTL (MOT)

DME or RADAR required.	MALSR	MISSED APPROACH: Climb to 3700 then left turn direct MOT VOR/DME and hold.
------------------------	-------	---

ASOS <b>118.725</b>	MINOT APP CON * <b>119.6 363.8</b>	MAGIC CITY TOWER * <b>118.2 (CTAF) 0 251.125</b>	GND CON <b>121.9</b>	UNICOM <b>122.95</b>
------------------------	---------------------------------------	---	-------------------------	-------------------------



3700	MOT	Use I-MOT DME when on the LOC course.			One Minute Holding Pattern
			FONAD I-MOT 6.8 RADAR	HEKTA I-MOT 13.6 RADAR	
* LOC only.	I-MOT 2.5	I-MOT 1.6	312°	132°	4500
					GS 3.00° TCH 49
CATEGORY	A	B	C	D	E
S-ILS 31	1879/24 200 (200-½)				
S-LOC 31	1980/24 301 (300-½)			1980/40 301 (300-¾)	
CIRCLING	2200-1 484 (500-1)	2240-1½ 524 (600-1½)	2280-2 564 (600-2)	2800-3 1084 (1100-3)	

NC-1, 31 DEC 2020 to 28 JAN 2021

NC-1, 31 DEC 2020 to 28 JAN 2021