

MINOT, NORTH DAKOTA

AL-635 (FAA)

19283

WAAS CH 56516 W26A	APP CRS 264°	Rwy Idg TDZE Apt Elev	6348 1682 1716
--	------------------------	-----------------------------	---

RNAV (GPS) RWY 26
MINOT INTL (MOT)

RNP APCH.

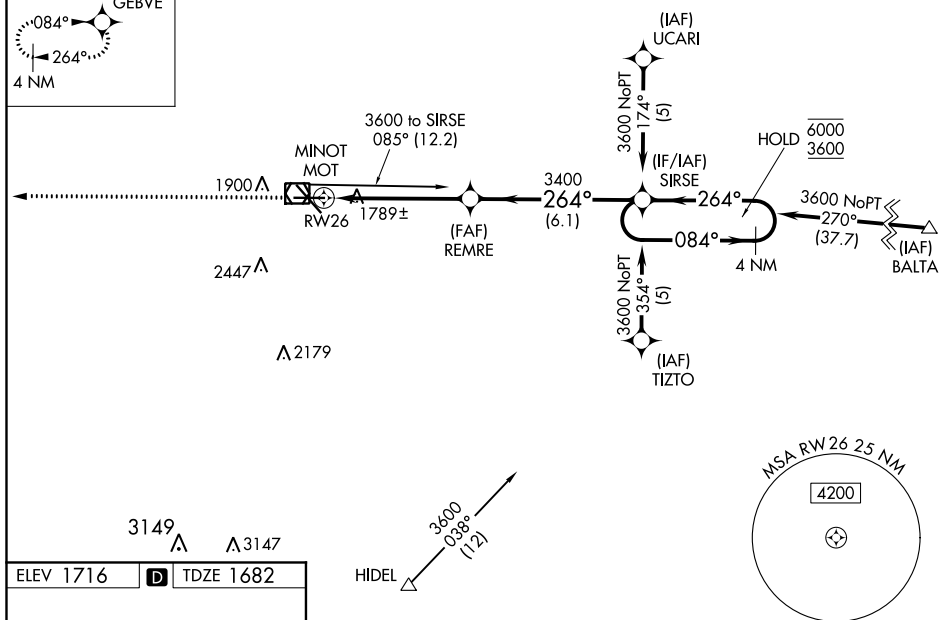
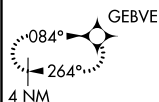


For uncompensated Baro-VNAV systems, LNAV/VNAV NA below -18°C or above 54°C.

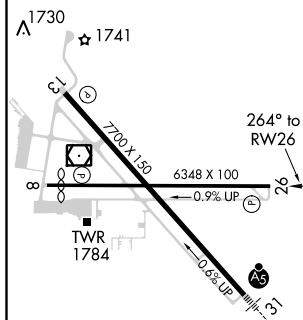
MISSED APPROACH: Climb to 3900 direct GEBVE and hold.

ASOS 118.725	MINOT APP CON ★ 119.6 363.8	MAGIC CITY TOWER ★ 118.2 (CTAF) 0 251.125	GND CON 121.9	UNICOM 122.95
------------------------	---------------------------------------	---	-------------------------	-------------------------

MISSED APCH FIX



ELEV 1716	D	TDZE 1682
-----------	----------	-----------



REIL Rwy 13
REIL Rwys 8 and 26 **L**
HIRL Rwys 8-26 and 13-31 **L**

<div style="display: flex; justify-content: space-around;"> <div style="text-align: center;"> 3900 *LNAV only. </div> <div style="text-align: center;"> GEBVE *1 NM to RW26 </div> </div>		<div style="display: flex; justify-content: space-between; align-items: flex-start;"> <div style="text-align: center;"> REMRE 3400 </div> <div style="text-align: center;"> SIRSE <div style="text-align: right;">4 NM Holding Pattern</div> <div style="display: flex; justify-content: space-between; align-items: center;"> <div>084° →</div> <div style="border-bottom: 1px solid black; width: 50px;"></div> <div>← 264°</div> </div> <div style="display: flex; justify-content: space-between; align-items: center;"> <div>6000</div> <div>3600</div> </div> </div> </div>			
		<div style="display: flex; justify-content: space-between; align-items: center;"> <div>GP 3.00°</div> <div>TCH 50</div> </div>			
CATEGORY		A	B	C	D
LPV DA		1932-1 250 (300-1)			
LNAV/VNAV DA		1932-1 250 (300-1)			
LNAV MDA		2040-1	358 (400-1)	2040-1 ³ / ₈	358 (400-1 ³ / ₈)
CIRCLING		2200-1	484 (500-1)	2280-1 ¹ / ₂ 564 (600-1 ¹ / ₂)	2280-2 564 (600-2)

MINOT, NORTH DAKOTA
Orig-A 10OCT19

48°15'N-101°17'W

MINOT INTL (MOT)
RNAV (GPS) RWY 26

NC-1, 31 DEC 2020 to 28 JAN 2021

NC-1, 31 DEC 2020 to 28 JAN 2021