

MINOT, NORTH DAKOTA

AL-635 (FAA)

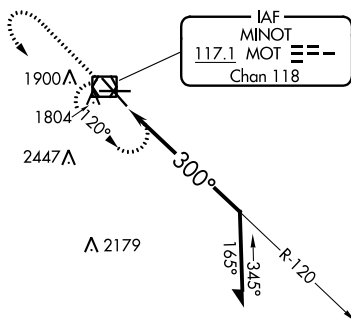
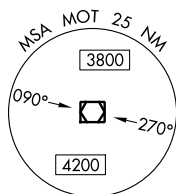
20310

VOR/DME MOT 117.1 Chan 118	APP CRS 300°	Rwy Idg 7700 TDZE 1679 Apt Elev 1716
--	------------------------	---

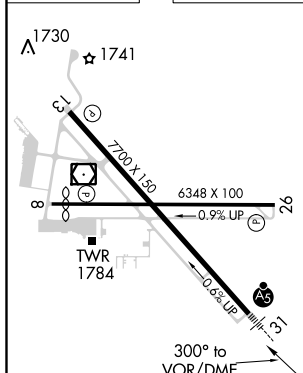
VOR RWY 31
MINOT INTL (MOT)



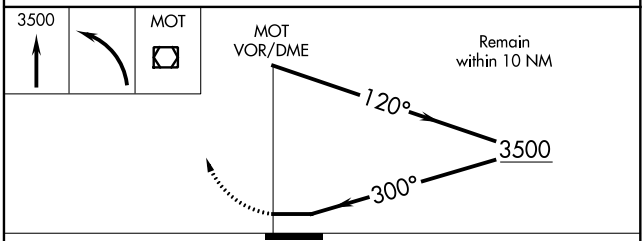
ASOS 118.725	MINOT APP CON ★ 119.6 363.8	MAGIC CITY TOWER ★ 118.2 (CTAF) 0 251.125	GND CON 121.9	UNICOM 122.95
-----------------	--------------------------------	--	------------------	------------------



ELEV 1716	D	TDZE 1679
-----------	----------	-----------



3149
A A3147



CATEGORY	A	B	C	D
S-31	2200/24	521 (500-½)	2200/55 521 (500-1)	2200/60 521 (500-1¼)
CIRCLING	2200-1	484 (500-1)	2280-1½ 564 (600-½)	2280-2 564 (600-2)

REIL Rwy 13
REIL Rwy 8 and 26 **L**
HIRL Rwy 8-26 and 13-31 **L**

MINOT, NORTH DAKOTA
Amdt 11A 10OCT19

48°15'N-101°17'W

MINOT INTL (MOT)
VOR RWY 31

NC-1, 31 DEC 2020 to 28 JAN 2021