

WAAS CH 56340 W17A	APP CRS 173°	Rwy Idg TDZE Apt Elev	5500 1302 1302
--	------------------------	-----------------------------	---

RNAV (GPS) RWY 17

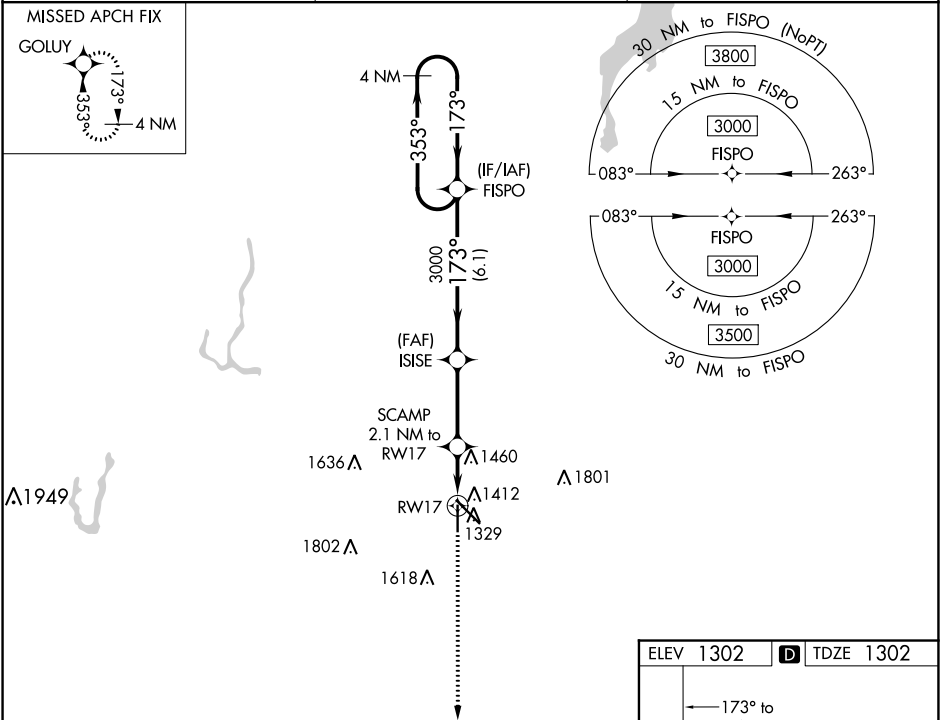
ABERDEEN RGNL (ABR)

⚠

For uncompensated Baro-VNAV systems, LNAV/VNAV NA below -22°C (-7°F) or above 54°C (130°F).
DME/DME RNP-0.3 NA.

MISSED APPROACH: Climb to 3000 direct GOLUY and hold.

ASOS 125.875	MINNEAPOLIS CENTER 120.6 371.9	UNICOM 122.7 (CTAF) 1
------------------------	--	--



4 NM Holding Pattern		FISPO	ISISE	3000	GOLUY
3000 ← 353°		173° →	3000	SCAMP 2.1 NM to RW17	*LNAV only
GP 3.00° TCH 40		173°	3000	*1.2 NM to RW17	RW17
		6.1 NM	3.1 NM	0.9 NM	1.2 NM
CATEGORY	A	B	C	D	
LPV DA	1502-3/4		200 (200-3/4)		
LNAV/VNAV DA	1624-1 1/8		322 (400-1 1/8)		
LNAV MDA	1720-1	418 (500-1)	1720-1 1/8	418 (500-1 1/8)	
CIRCLING	1760-1 458 (500-1)	1860-1 558 (600-1)	1960-1 3/4 658 (700-1 3/4)	2160-2 3/4 858 (900-2 3/4)	

ELEV 1302 TDZE 1302

HIRL Rwy 13-31
MIRL Rwy 17-35
REIL Rws 13, 17 and 35