

LOC/DME I-RAP 109.3 Chan 30	APP CRS 324°	Rwy Idg 8701 TDZE 3160 Apt Elev 3204
---	------------------------	---

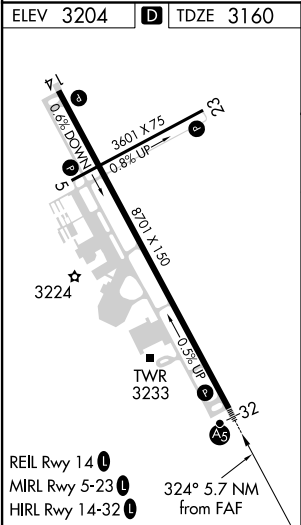
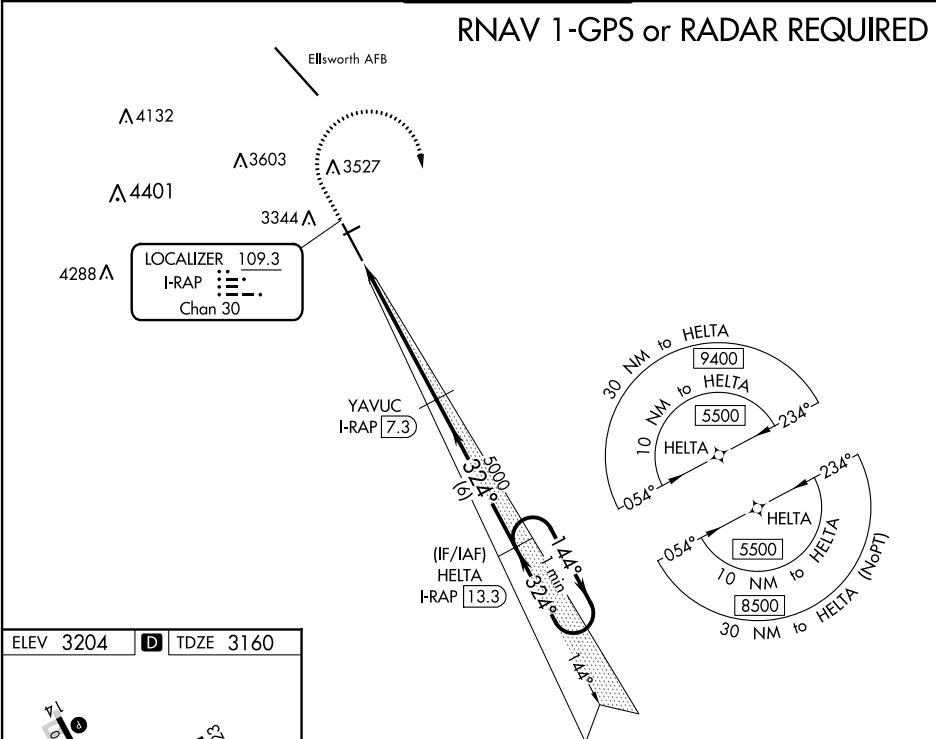
ILS or LOC RWY 32
RAPID CITY RGNL (RAP)

⚠ DME and RNAV 1-GPS required. ILS glideslope unusable for coupled approaches below 3360. For inop ALS, increase S-ILS Cat E visibility to RVR 4000 and S-LOC Cat E visibility to 1½ SM. # RVR 1800 authorized with use of FD or AP or HUD to DA.



MISSED APPROACH: Climb to 3700 then climbing right turn to 5500 direct HELTA and hold.

ASOS 118.525	ELLSWORTH APP CON ★ 119.5 259.1	RAPID CITY TOWER ★ 125.85 (CTAF) 257.8	GND CON 121.9	UNICOM 122.95
------------------------	---	--	-------------------------	-------------------------



ELEV 3204	D	TDZE 3160
3700	5500	HELTA I-RAP 13.3
Use I-RAP DME when on the LOC course.		
*LOC only.	*I-RAP 2.9	YAVUC I-RAP 7.3
I-RAP 1.6	5000	HELTA I-RAP 13.3
1.3 NM	4.4 NM	6 NM
3700	5500	HELTA I-RAP 13.3
One Minute Holding Pattern		
GS 3.00° TCH 54		
CATEGORY	A	B
S-ILS 32#	3360/24 200 (200-½)	
S-LOC 32	3620/24 460 (500-½)	3620/45 460 (500-¾)
CIRCLING	3660-1 456 (500-1)	3840-1 636 (700-1)
	3860-1¾ 656 (700-1¾)	3940-2¼ 736 (800-2¼)
	3960-2¾ 756 (800-2¾)	

NC-1, 31 DEC 2020 to 28 JAN 2021

NC-1, 31 DEC 2020 to 28 JAN 2021