

WAAS CH <b>40433</b> <b>W23A</b>	APP CRS <b>234°</b>	Rwy Idg TDZE Apt Elev	<b>3601</b> <b>3204</b> <b>3204</b>
--	------------------------	-----------------------------	---

RNAV (GPS) RWY 23

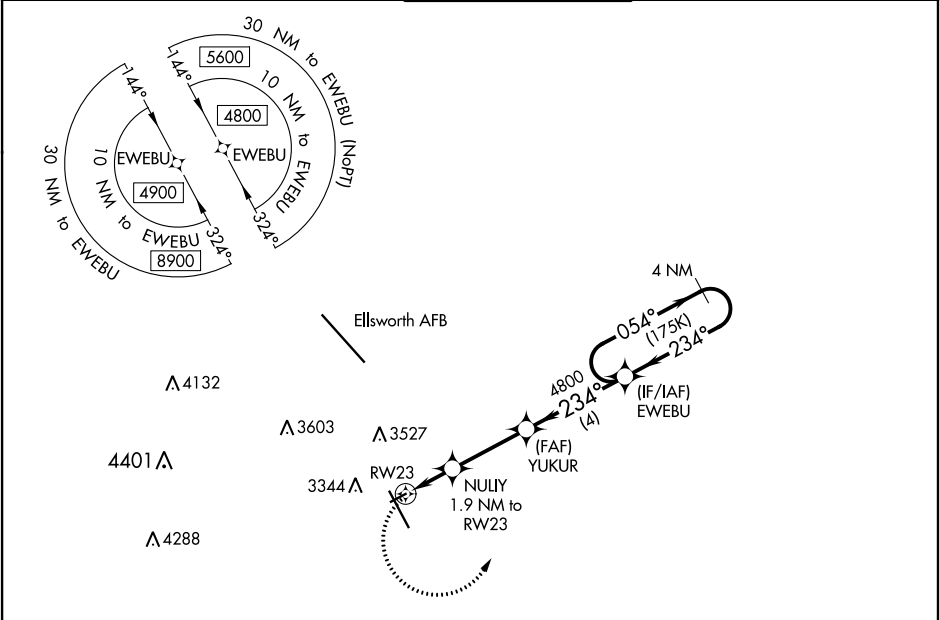
RAPID CITY RGNL (RAP)

⚠

For uncompensated Baro-VNAV systems, LNAV/VNAV NA below -21°C (-5°F) or above 54°C (130°F). DME/DME RNP-0.3 NA. When local altimeter setting not received, use Ellsworth AFB altimeter setting and increase all DA 25 feet and all MDA 40 feet. VDP and Baro-VNAV NA when using Ellsworth AFB altimeter setting.

MISSED APPROACH: Climbing left turn to 5300 direct EWEBU and hold.

ASOS <b>118.525</b>	ELLSWORTH APP CON ★ <b>119.5 259.1</b>	RAPID CITY TOWER ★ <b>125.85 (CTAF) 0 257.8</b>	GND CON <b>121.9</b>	UNICOM <b>122.95</b>
------------------------	---	--	-------------------------	-------------------------



ELEV 3204 D TDZE 3204	
*LNAV only.	
*1 NM to RWY 23	
GP 3.00° TCH 38	
1 NM 0.9 NM 3 NM 4 NM	
CATEGORY	A B C D
LPV DA	3454-1 250 (300-1) NA
LNAV/VNAV DA	3454-1 250 (300-1) NA
LNAV MDA	3560-1 356 (400-1) NA
CIRCLING	3660-1 3840-1 NA
	456 (500-1) 636 (700-1)