

WAAS CH 93717 W32A	APP CRS 324°	Rwy Idg TDZE Apt Elev	8701 3160 3204
--	------------------------	-----------------------------	---

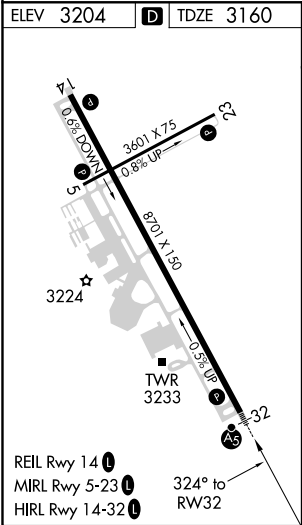
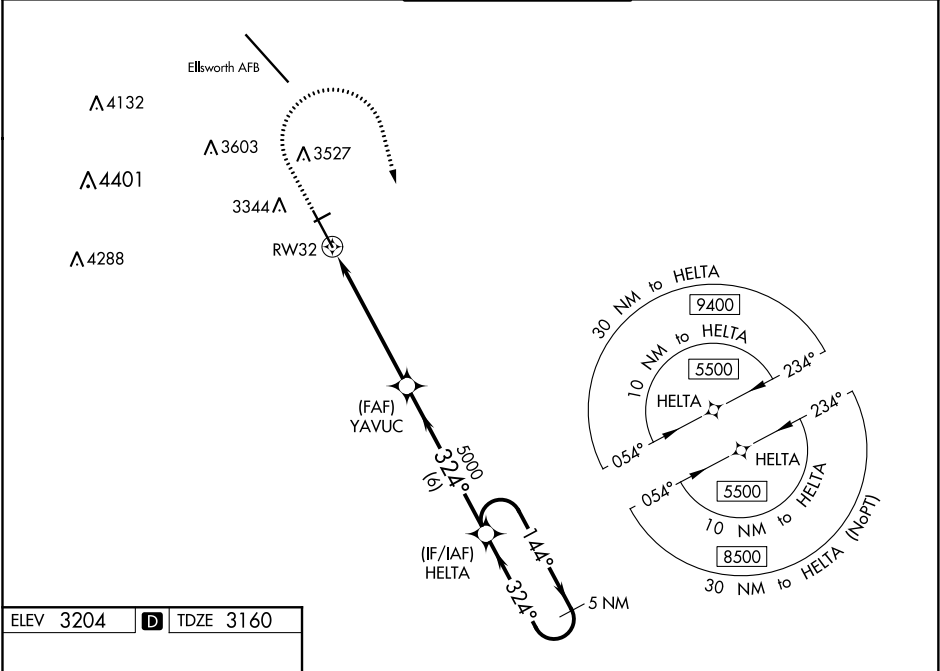
RNAV (GPS) RWY 32
RAPID CITY RGNL (RAP)




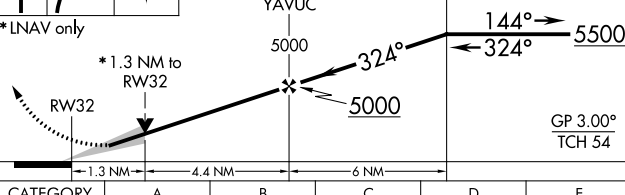

⚠ For uncompensated Baro-VNAV systems, LNAV/VNAV NA below -24°C (-11°F) or above 51°C (125°F). DME/DME RNP-0.3 NA. For inop ALS, increase LPV Cat E visibility to RVR 4000, LNAV/VNAV all Cats to RVR 4500 and LNAV Cat E to 1½ SM. # RVR 1800 authorized with use of FD or AP or HUD to DA.

MALSR

MISSED APPROACH: Climb to 3700 then climbing right turn to 5500 direct HELTA and hold.

ASOS 118.525	ELLSWORTH APP CON ★ 119.5 259.1	RAPID CITY TOWER ★ 125.85 (CTAF) 0 257.8	GND CON 121.9	UNICOM 122.95
------------------------	---	--	-------------------------	-------------------------



3700	5500	HELTA			
					
* LNAV only					
					
CATEGORY	A	B	C	D	E
LPV DA#	3360/24 200 (200-½)				
LNAV/VNAV DA	3410/24 250 (300-½)				
LNAV MDA	3620/24	460 (500-½)	3620/45	460 (500-¾)	
 CIRCLING	3660-1 456 (500-1)	3840-1 636 (700-1)	3860-1¾ 656 (700-1¾)	3940-2¼ 736 (800-2¼)	3960-2¾ 756 (800-2¾)

NC-1, 31 DEC 2020 to 28 JAN 2021

NC-1, 31 DEC 2020 to 28 JAN 2021