

WAAS CH 82633 W05A	APP CRS 054°	Rwy Idg TDZE 3199 Apt Elev 3204
--	------------------------	---

RNAV (GPS) RWY 5

RAPID CITY RGNL (RAP)

⚠

For uncompensated Baro-VNAV systems, LNAV/VNAV NA below -21°C (-5°F) or above 54°C (130°F). DME/DME RNP-0.3 NA. When local altimeter setting not received, use Ellsworth AFB altimeter setting and increase all DA 25 feet and all MDA 40 feet. VDP and Baro-VNAV NA with Ellsworth AFB altimeter setting.

MISSED APPROACH: Climb to 5300 direct EWEBU and hold.

ASOS 118.525	ELLSWORTH APP CON ★ 119.5 259.1	RAPID CITY TOWER ★ 125.85 (CTAF) 0 257.8	GND CON 121.9	UNICOM 122.95
------------------------	---	--	-------------------------	-------------------------

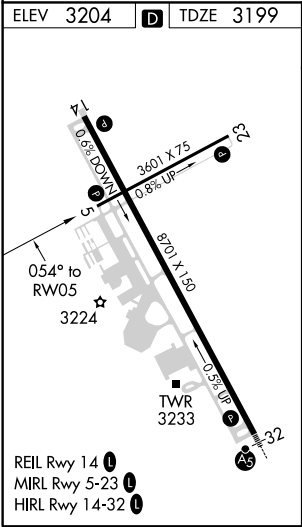
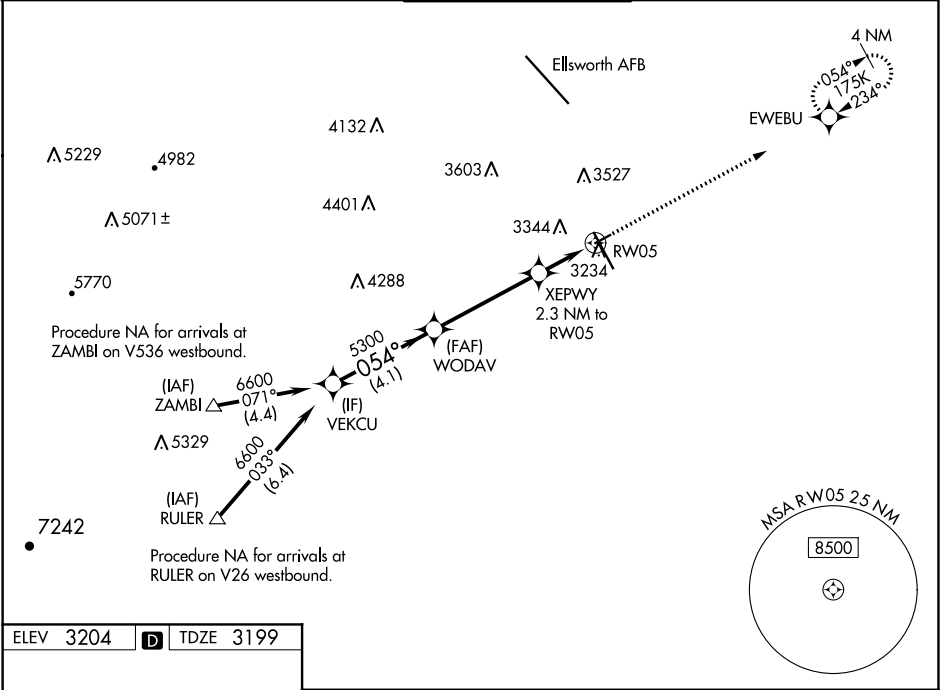



Diagram illustrating a flight path segment from VEKCU to RW05. The path starts at VEKCU (6600) and descends at 054° to WODAV (5300). From WODAV, the path continues to XEPWY (2.3 NM to RW05) and then to RW05 (0.9 NM to RW05). The final segment is marked *3920. A GP 3.00° TCH 34 is indicated. A compass rose shows 5300 and EWEBU. *LNAV only.

CATEGORY		A		B	C	D
LPV	DA	3449-1	250 (300-1)			NA
LNAV/ VNAV	DA	3449-1	250 (300-1)			NA
LNAV	MDA	3500-1	301 (300-1)			NA
 CIRCLING		3660-1 456 (500-1)	3840-1 636 (700-1)			NA