

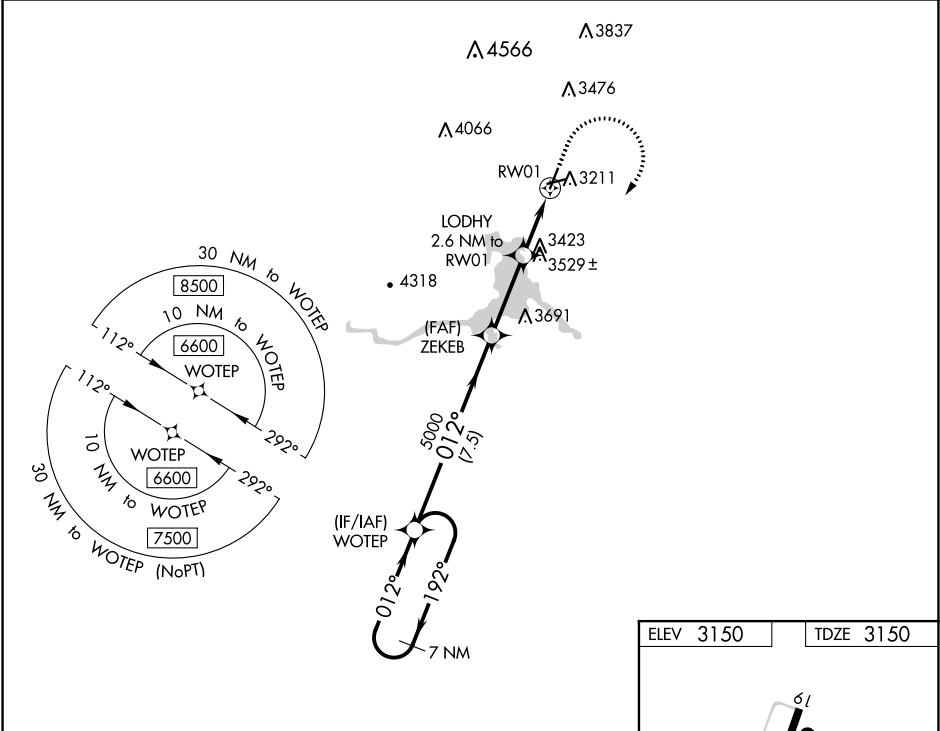
WAAS CH 99628 W01A	APP CRS 012°	Rwy Idg TDZE Apt Elev	4506 3150 3150
--	------------------------	-----------------------------	---

RNAV (GPS) RWY 1

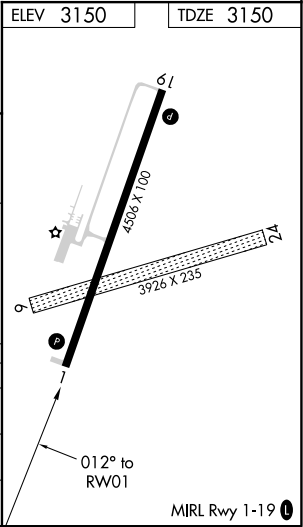
HOT SPRINGS MUNI (HSR)

<div><div>▼</div><div>NA</div></div> <div>Rwy 1 helicopter visibility reduction below ¾ NA. DME/DME RNP-0.3 NA. Circling NA west of Rwy 1-19. Use Chadron, NE altimeter setting, when not received use Rapid City Rgnl altimeter setting and increase all MDA 20 feet, increase LNAV Cat B visibility ¼ mile. Circling NA to Rwy 6 and 24.</div>	<div>MISSED APPROACH: Climb to 3900, then climbing right turn to 6600 direct WOTEP and hold.</div>
--	--

CDR ASOS 118.05	DENVER CENTER 127.95 338.2	GCO 121.725	AUNICOM 122.8 (CTAF) 0
---------------------------	--------------------------------------	-----------------------	----------------------------------



--	--



NC-1, 31 DEC 2020 to 28 JAN 2021

NC-1, 31 DEC 2020 to 28 JAN 2021