

WAAS CH 73036 W12A	APP CRS 115°	Rwy Idg TDZE Apt Elev	6000 1621 1648
--	------------------------	-----------------------------	---

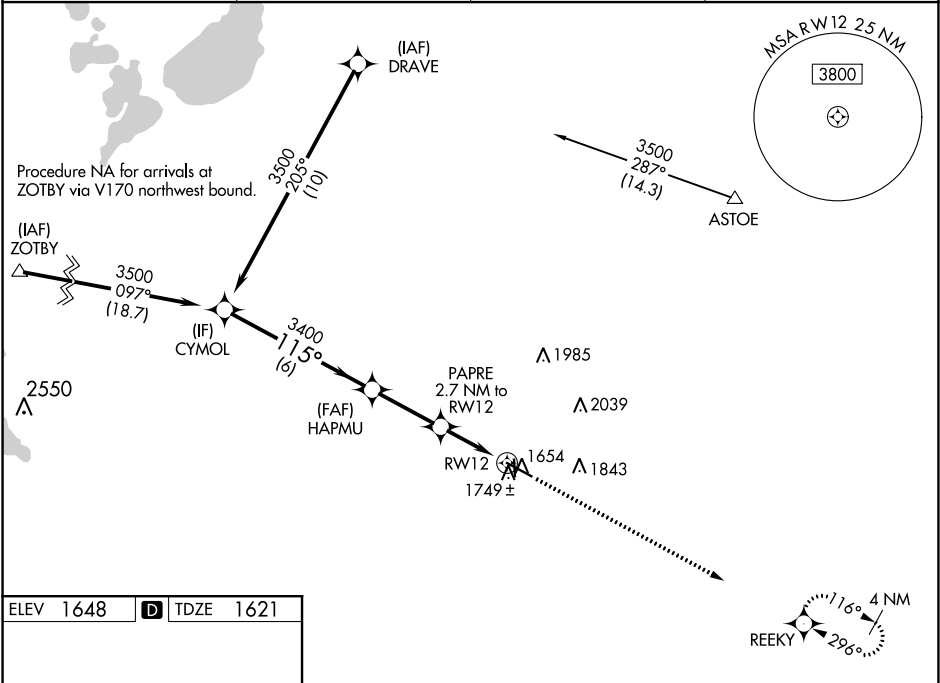
RNAV (GPS) RWY 12
BROOKINGS RGNL (BKK)

⚠ For uncompensated Baro-VNAV systems, LNAV/VNAV NA below -18°C (0°F) or above 54°C (130°F). DME/DME RNP-0.3 NA. When local altimeter setting not received, use Pipestone altimeter setting and increase all DA 81 feet and all MDA 100 feet; increase LNAV/VNAV all Cats visibility ¼ mile; LNAV Cats C and D visibility ⅜ mile; Circling Cats C and D visibility ¼ mile. Baro-VNAV and VDP NA when using Pipestone altimeter setting. Night landing Rwy 17 NA.

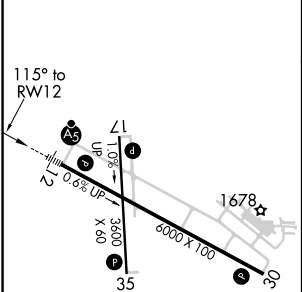
MALSR

⚠ MISSED APPROACH: Climb to 3500 direct REEKY and hold.

AWOS-3PT 119.925	MINNEAPOLIS CENTER 132.05 317.4	GCO 121.725	UNICOM 123.0 (CTAF) Ⓜ
----------------------------	---	-----------------------	--



ELEV 1648	D	TDZE 1621
-----------	----------	-----------



	CYMOL	HAPMU	PAPRE 2.7 NM to RWY 12	RWY 12
	3500	3400	*2500	
	GP 3.00° TCH 50		*1.1 NM to RWY 12	
	6 NM	2.8 NM	1.6 NM	1.1 NM
CATEGORY	A	B	C	D
LPV DA	1821-½ 200 (200-½)			
LNAV/VNAV DA	1948-⅝ 327 (300-⅝)			
LNAV MDA	2000-½ 379 (400-½)		2000-⅝ 379 (400-⅝)	
C CIRCLING	2140-1 492 (500-1)	2160-1 512 (600-1)	2340-2 692 (700-2)	2340-2¼ 692 (700-2¼)

HIRL Rwy 12-30 **Ⓜ**
MIRL Rwy 17-35 **Ⓜ**
REIL Rwy 17, 30 and 35 **Ⓜ**

NC-1, 31 DEC 2020 to 28 JAN 2021

NC-1, 31 DEC 2020 to 28 JAN 2021