

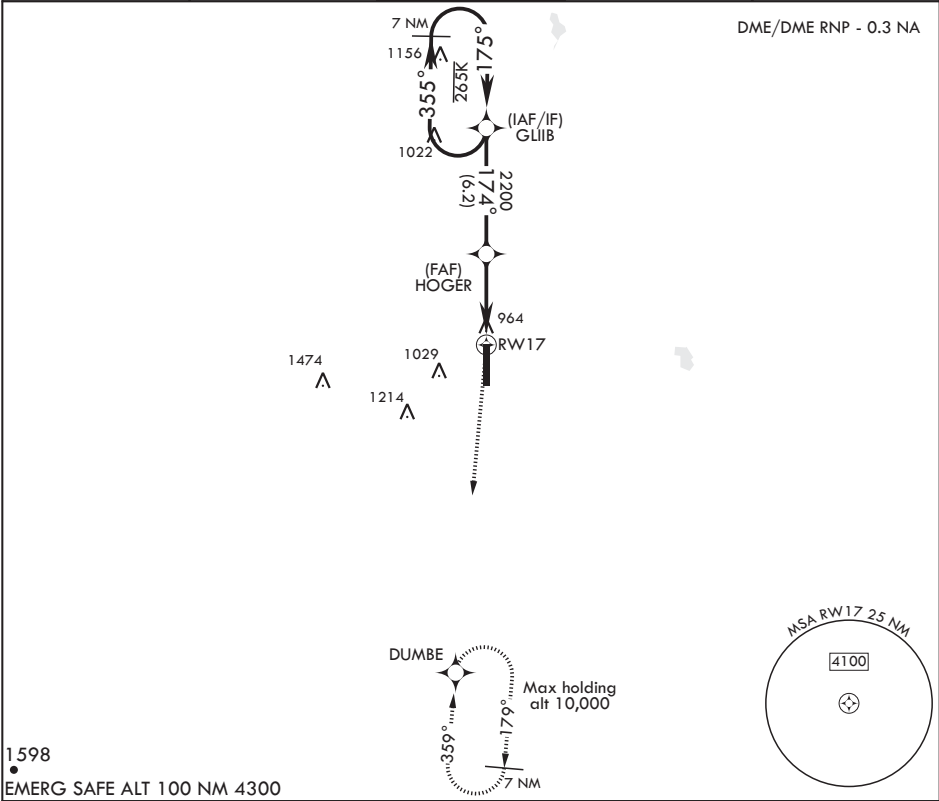
APCH CRS	Rwy Idg	12,351
174°	TDZE	900
	Arpt Elev	911

AL-5010 (USAF)

GRAND FORKS AFB (KRDR)

* When ALS inop, increase CAT AB RVR to 55 and vis to 1 mile, CAT CDE vis to 1 1/4 miles. ** Circling E of Rwy 17-35 not authorized.		ALSF-1	MISSED APPROACH: Climb to 3000 direct DUMBE and hold.

ATIS 273.45	APP CON 118.1 318.1	RED RIVER TOWER 124.9 349.0	GND CON 119.15 275.8	CLNC DEL 119.15 360.7
----------------	------------------------	--------------------------------	-------------------------	--------------------------



		CATEGORY		A	B	C	D	E
LNAV MDA*		1320/24	420	(500-1/2)	1320/40	420	(500-3/4)	
CIRCLING**		1340-1	1380-1	1380-1 1/2	1480-2	2040-3		
		429 (500-1)	469 (500-1)	469 (500-1 1/2)	569 (600-2)	1129 (1200-3)		