

MINOT, NORTH DAKOTA

COPTER RNAV (GPS) RWY 30

WAAS CH 91355 W30A	APCH CRS 298°	Rwy ldg TDZE 13,198 Arprt Elev 1666
--------------------------	------------------	---

AL-5013 (USAF)

MINOT AFB (KMIB)

\* When ALS inop, increase CAT A RVR to 40, vis to 3/4 mile.  
\*\* When ALS inop, increase CAT A vis to 1 5/8 miles.  
\*\*\* When ALS inop, increase CAT A RVR to 55, vis to 1 mile.



MISSED APPROACH: Climb to 2100 then climbing right turn to 3600 direct JUSDU and hold, continue climb-in-hold to 3600.

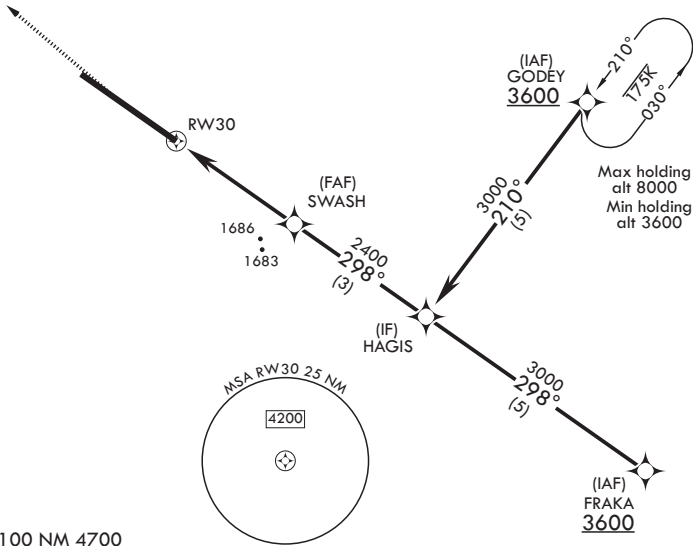
ATIS★ 278.8	APP CON 119.6 363.8	TOWER★ 120.65 253.5	GND CON 134.0 275.8	CLNC DEL 326.2
----------------	------------------------	------------------------	------------------------	-------------------

\*\*\*\* Circling NA NE of Rwy 12-30.

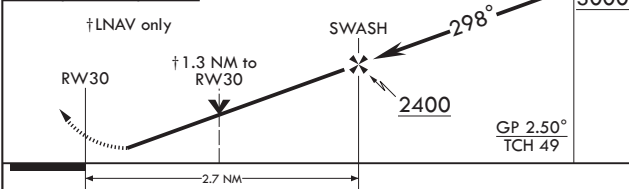
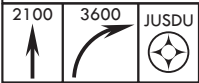


Max holding  
alt 6000  
Min holding  
alt 3600

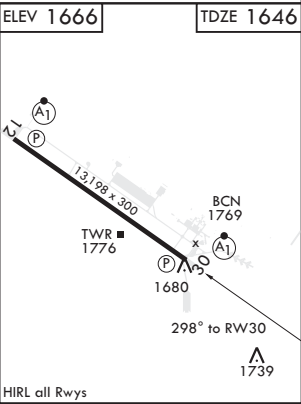
For uncompensated  
Baro-VNAV systems,  
procedure NA below  
12°C (54°F) or  
above 54°C (130°F).



1874  
• EMERG SAFE ALT 100 NM 4700



CATEGORY	COPTER		
LPV DA*	1846/24	200	(200-1/4)
LNAV/VNAV DA**	2040/60	394	(400-11/2)
LNAV MDA***	2040/24	394	(400-11/2)
C CIRCLING****	2120-1	454	(500-1)



MINOT, NORTH DAKOTA

48°25'N - 101°21'W

MINOT AFB (KMIB)

Orig 19JUL18

COPTER RNAV (GPS) RWY 30

NC-1, 31 DEC 2020 to 28 JAN 2021

NC-1, 31 DEC 2020 to 28 JAN 2021