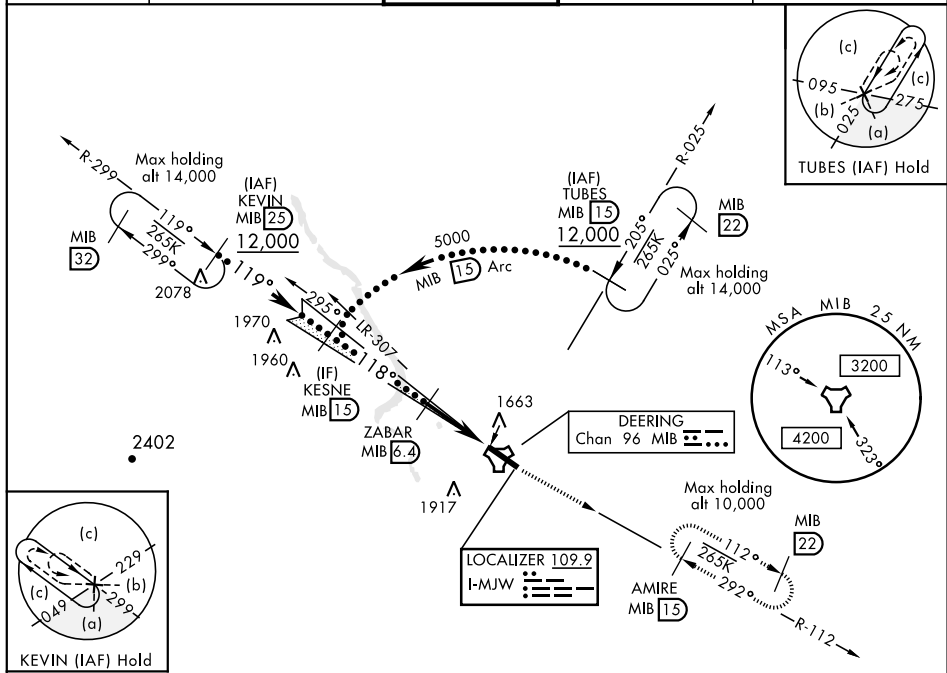


LOC I-MJW 109.9	APCH CRS 118°	Rwy ldg 13,198 TDZE 1666 Arpt Elev 1666	JAL-5013 [USAF]	MINOT AFB (KMIB)
* When ALS inop, increase CAT CDE RVR to 40 and vis to $\frac{3}{4}$ mile. ** When ALS inop, increase CAT CDE vis to 1 $\frac{1}{4}$ mile, *** Circling not authorized N of Rwy 12-30.			ALSF-1 (A1)	MISSED APPROACH: Climb to 5000 via MIB TACAN R-112 direct AMIRE and hold.

ATIS ★ 278.8	MINOT APP CON 119.6 363.8	MINOT TOWER ★ 120.65 253.5	GND CON 134.0 275.8	CLNC DEL 326.2
------------------------	-------------------------------------	--------------------------------------	-------------------------------	--------------------------



RADAR or DME REQUIRED

EMERG SAFE ALT 100 NM 4700

