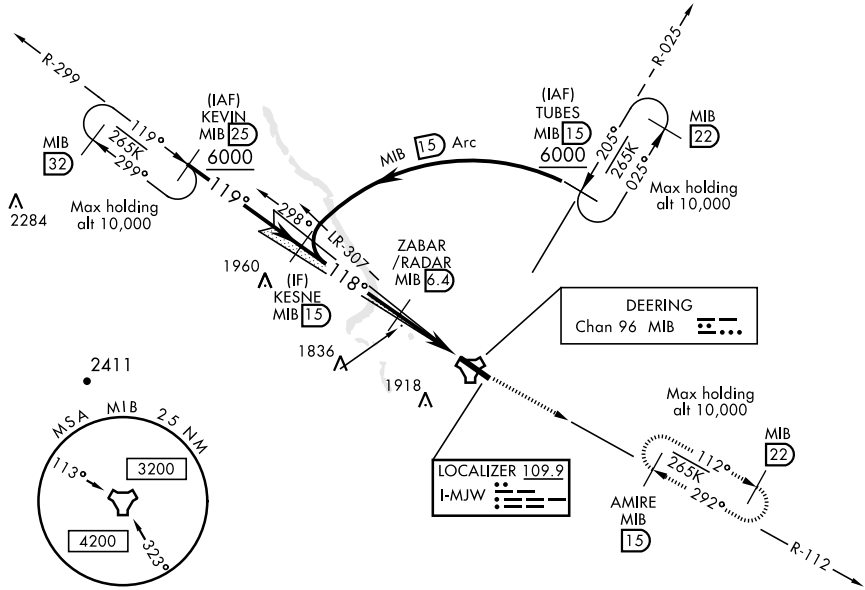


ILS or LOC Y RWY 12

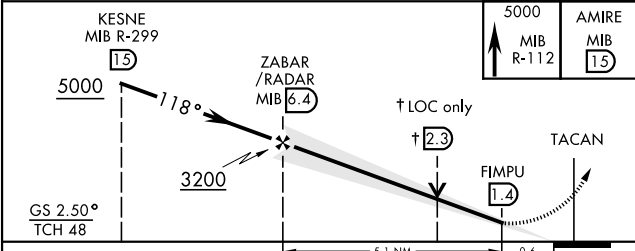
LOC I-MJW 109.9	APCH CRS 118°	Rwy ldg 13,198 TDZE 1666 Arpt Elev 1666	AL-5013 [USAF]	MINOT AFB (KMIB)
* When ALS inop, increase RVR to 40 and vis to ¾ mile. ** When ALS inop, increase CAT AB RVR to 55 and vis to 1 mile, CAT CDE vis to 1¼ miles.			ALSF-1 	MISSED APPROACH: Climb to 5000 via MIB TACAN R-112 direct AMIRE and hold.
ATIS ★ 278.8	MINOT APP CON 119.6 363.8	MINOT TOWER ★ 120.65 253.5	GND CON 134.0 275.8	CLNC DEL 326.2

*** Circling not authorized N of Rwy 12-30.

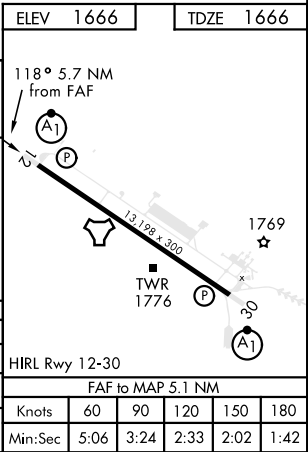


RADAR or DME
REQUIRED

EMERG SAFE ALT 100 NM 4700



CATEGORY	A	B	C	D	E
S-ILS 12*	1866/24 (200-½)				
S-LOC 12**	2100/24	434 (500-½)	2100/40	434 (500-¾)	
CIRCLING***	2120-1 454 (500-1)	2140-1 474 (500-1)	2180-1½ 514 (600-1½)	2220-2	554 (600-2)



ILS or LOC Y RWY 12

NC-1, 31 DEC 2020 to 28 JAN 2021

NC-1, 31 DEC 2020 to 28 JAN 2021